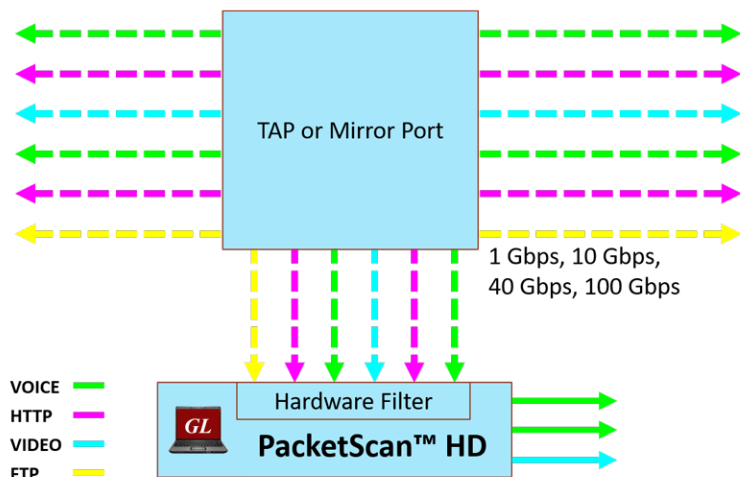


# High Density Ethernet Monitoring Appliance - PacketScan™ HD

(1G, 10G, 25G, 40/100G)



## Overview

**PacketScan™ HD** is a high density Ethernet monitoring appliance with specialized network interface cards, large storage capacity and protocol analysis software. Customers can choose the specific Ethernet data rate for the network interface cards including 4 x 1 GigE (PKV120), 2 x 10 GigE (PKV122), 2 x 40 GigE (PKV123) and 2 x 40 / 2 x 100 GigE (PKV124) variations.

Capture and analyze high speed Ethernet traffic over 1 Gbps, 10 Gbps, 40 Gbps and 100 Gbps networks. Almost all VoIP and Wireless protocols over IP transport layer can be captured and decoded for troubleshooting network problems. PacketScan™ HD appliance is also available in three new variants.

Part Number	PKV120(Rack system)/ PKV120P(Portable system)	PKV122(Rack system)/ PKV122P(Portable system)	PKV124(Rack system)/ PKV124P(Portable system)
Processor	Single Processor	Dual Processor Xeon /Single Processor	Dual Processor Xeon/Single Processor
RAM	16 GB	32 GB	128 GB
Storage	500 GB SSD up to 5.6 TB NVME SSD		
Data Rate	4x1GigE	4x1/10GigE or 2x1/10GigE	8x10GigE, 2x10/25GigE, 2x40GigE, 2x100GigE

GL's [PacketScan™ HD 5G Protocol Analyzer](#) can monitor 5G networks. It captures, decodes, and collects statistics over N1N2, N4, N8, N10, N11, N12 and N13 interfaces of the 5G network. The 5G Protocol Analyzer is an optional module available within PacketScan™ HD on purchasing of additional licensing.

PacketScan™ HD supports decoding of [eCPRI protocol](#) which enables analysis of eCPRI message types such as IQ Data, Bit Sequence, Generic Data Transfer, Remote Memory Access, One-way Delay Measurement, Remote Reset, and Event Indication.

GL's **TCP Analytics** application analyzes TCP connections between both internal LAN and external WAN computers including servers and clients. The application helps troubleshoot large bandwidth consumption, failed TCP sessions, packet loss, poor TCP throughput and more. TCP Analytics (PKV400) is an optional application with PacketScan™ HD Network Monitoring Appliance. For more details, refer to [TCP Analytics](#) webpage.

For more details, refer to [PacketScan™ HD - Network Monitoring Appliance](#) webpage.



818 West Diamond Avenue - Third Floor, Gaithersburg, MD 20878, U.S.A  
(Web) [www.gl.com](http://www.gl.com) - (V) +1-301-670-4784 (F) +1-301-670-9187 - (E-Mail) [info@gl.com](mailto:info@gl.com)

## Main Features

- Supports the following configurations: 4 x 1 GigE (PKV120), 2 x 10 GigE (PKV122), 2 x 40 GigE (PKV123) and 2 x 40 / 2 x 100 GigE
- PacketScan™ HD works with [FastRecorder™](#) and [PacketExtractor™](#) application for wirespeed IP traffic filtering and recording capabilities of up to 320 Gbps directly onto disk for offline filtering, extraction, and analysis
- Using PacketScan™ HD system along with FastRecorder™ application, users can capture the traffic and analyze the captured data using GL [IP Analytics™](#) tool
- Supports 5G interfaces – N1N2, N4, N8, N10, N11, N12, and N13
- Wirespeed unfiltered continuous capture to NVMe SSD – up to hard disk size
- PacketScan™ HD can monitor 20,000 simultaneous calls with bidirectional RTP traffic from 1 Gbps to 100 Gbps link rates. Up to 50,000 calls can be achieved by scaling with higher configurations
- Simultaneous operations with contiguous/multiple cards, (1GigE, 10 GigE, and 40 GigE) subject to the performance limitation and up to maximum of 4 cards are supported
- Provides wirespeed hardware filter capabilities to filter traffic of interest
- Supports almost all industry standard IP and Wireless Protocols (from SIP to LTE)
- Supports all RTP traffic – Voice, Data, Video, Fax T.38, Digits, Tones, Impairments
- Capture and Call processing is enhanced to handle different Tunnel traffic (VXLAN, GRE and GTP) and multiple tunnelling
- Support for eCPRI decode

### As a Single Point Packet over IP CDR Analysis System

- PacketScan™ HD can work with GL's [VoiceBand Analyzer \(VBA\)](#) and [Call Data Records \(CDR\)](#) applications to generate Call Detail Records as (\*.CSV files) along with voice files for each direction
- PacketScan™ HD can send protocol fields, and call detail records, along with traffic summary of captured calls to a central database and [NetSurveyorWeb™](#) displays the data from the database in a simple web-based browser, featuring rich graphics, custom search, report and filter configurations

### Filter and Search Capabilities

PacketScan™ HD supports three stages of filtering:

- Hardware Filter - high speed, discards unwanted packets at the hardware level
- Capture Filter - slower discards unwanted packets at the application level
- View Filter and Search (Post Capture Filter) - performs filtering on the captured trace only for viewing purposes; filtered trace can be exported to PCAP or GL's HDL file format

### Supported Codecs

- G.711 (a-Law and  $\mu$ -Law), G.711 App II (a-Law and  $\mu$ -Law with VAD)
- G.722, G.722.1 (Wideband), G.726, G.726, with VAD, G729, G729B (8kbps)
- GSM, GSM HR, GSM EFR
- SPEEX/SPEEX\_WB (Narrow band/Wideband)
- iLBC (20ms and 30ms), SMV
- AMR/AMR\_WB (Narrow band/Wideband) (requires additional license)
- EVRC, EVRC0, EVRC-B, EVRC-B0, EVRC-C (requires additional license). Visit [Voice Codec](#) webpage for more details

### Supported Protocols

- SIP, SIP-I, SIP-T, H.323, MEGACO, MGCP, Diameter, Skinny (SCCP)
- LTE, SIGTRAN – SS7, ISDN, GSM A and Abis over IP, GPRS Gb and Gn over IP
- UMTS IuCS, IuH, IuPS, and IuUP over IP, T.38 Fax and Video calls. Visit [Supported Protocols](#) for more details

## Main Features (Contd.)

### QOS Parameters

- E-model (G.107) based MOS/R-Factor scores
- Media Delivery Index (Delay Factor: Media Loss Rate) for video calls
- H.263, H.264 codec support for video conference monitoring capability

### Traffic Handling

- All RTP traffic supported – Digits, Tones, Voice, Video, Fax
- SIP ED 137B for Air Traffic Monitoring (Air-to-Ground and Ground-to-Ground Calls)
- Segregation of IP traffic and signaling
- Listen and Record audio streams, Video QoS Statistics
- Filters based on WhiteList Calls, Criteria based Voice/Trace Recording

### Performance Metrics

- Signaling, audio, and video QoS parameters for each call
- Minimum, maximum and average round trip delay
- Inband (DTMF and MF) events, Outband events as per RFC 2833 or RFC 4733 events, RTP/RTCP packet count and reports per direction

### Triggers and Actions

- Filter the completed calls captures based on different signaling parameters and then specify a series of actions to be taken

### Report Generation

- Ability to export summary report of selected or all completed calls in Packet Data Analyzer to CSV file format
- Analyze the CSV files using custom [Excel® addins](#)
- Ability to save a particular call in HDL, PCAP, or PCAPNG file format for further detail analysis
- Generates alert summary when particular vital parameters go beyond a specified value

### Statistics

- Quality Metrics with E-Model R-Factor and MOS Factors graphs, Jitter Buffer Statistics, Degradation Factor, Burst Metrics, and Delay Metrics
- Active calls, Average jitter, Packets Discarded, RTP packets summary, Detail ladder diagram

## Specifications

Supported Interfaces	<p>4x 1 Gbps – 850/1310 nm SFP Module; Ethernet/Optical SFP</p> <p>2x 10 Gbps – 10GBASE-SR SFP+; Optical only</p> <p>2x 40 Gbps – MTP/MPO Connector for CFP2; Optical only</p> <p>2x 40/2x 100 Gbps – MTP/MPO Connector for CFP2; Optical only</p>
OSI	MAC, ARP, IP, IGMP, ICMP, TCP, UDP, SCTP, FTP, HTTP, TLS, SMTP
Protocols	<p>GSM, UMTS, LTE, IMS, SIP, RTP, T.38, RTCP, and much more</p> <p>(some protocol support requires additional licensing)</p>
Capture Timestamp	Absolute, Relative, Difference, NTP
Captured Trace Format	<p>GL's Proprietary HDL, PCAP, PCAPNG</p> <p>Frame Decodes can be saved to TXT file format</p>



**PacketScan™ HD Rack System -1G/10G/40G/100G**



**PacketScan™ HD Portable System  
1G/10G/40G/100G**



**Pelican Carry Case**

## Specifications (Contd.)

Filter	Hardware Filter at line rate, Application Level Capture Filter, and Post Processing Filter and Search
Performance	<p><b>4 x 1GigE</b> – 20000 calls with bi-directional RTP traffic</p> <p><b>2 x 10GigE</b> – 30000 calls with bi-directional RTP traffic</p> <p>Extracting/recording voice</p> <ul style="list-style-type: none"> <li>• 2500 simultaneous calls (maximum)</li> <li>• Option to record filtered calls of interest only</li> </ul>
Protocols	GSM, UMTS, LTE, IMS, SIP, RTP, T.38, RTCP, and much more (some protocol support requires additional licensing)
Rack/Portable System Specifications	<ul style="list-style-type: none"> <li>• Intel® Core™ i7</li> <li>• 16GB expandable Memory</li> <li>• Intel DQ67SW uATX LGA1155/Q67 Motherboard</li> <li>• 17" 1280 x 1024 LCD (Optional Resistive Touch)</li> <li>• LCD Specifications : 180°H/180°V viewing angle, 250 nits, 1500:1contrast ratio 16.7M colors, 8ms response time</li> <li>• DVI-A for integrated LCD Video Interface</li> <li>• Std I/O Interfaces Integrated GbE, Serial Port, 2 USB3, 4 USB2, 2 eSATA, 2 SATA6, 2 SATA3, 1394, Audio/Speaker</li> <li>• PCI Expansion Slots One PCIe 16, one PCIe 4 (or PCI)</li> <li>• PCI Slot Lengths 9-13" depending on configuration</li> <li>• Removable Hard Drives Up to 4 2.5" SATA/SSD</li> <li>• Total storage up to 4 TBytes</li> <li>• Optical Drive DVD/CD Writer or BluRay Burner</li> <li>• Video Projector Ports DVI-I and Display Port</li> <li>• Power Supply 275 Watt 90 – 264VAC 50 – 60 Hz</li> <li>• Size Closed 16"W x 16.3"H x 5.4"D</li> <li>• Size Open 16"W x 16.3"H x 8"D</li> <li>• Environmental 0° - 50°C 10-90% Rel. humidity</li> <li>• Transit Case (Optional) Pelican™ 1610 with custom polyethylene foam</li> <li>• Weight 26 pounds; Total Weight of Computer with Transit 40-45 pounds</li> </ul>

## Portable Platforms



w/ 2x 10GigE (PKV122)



w/ 4x 1GigE (PKV120)



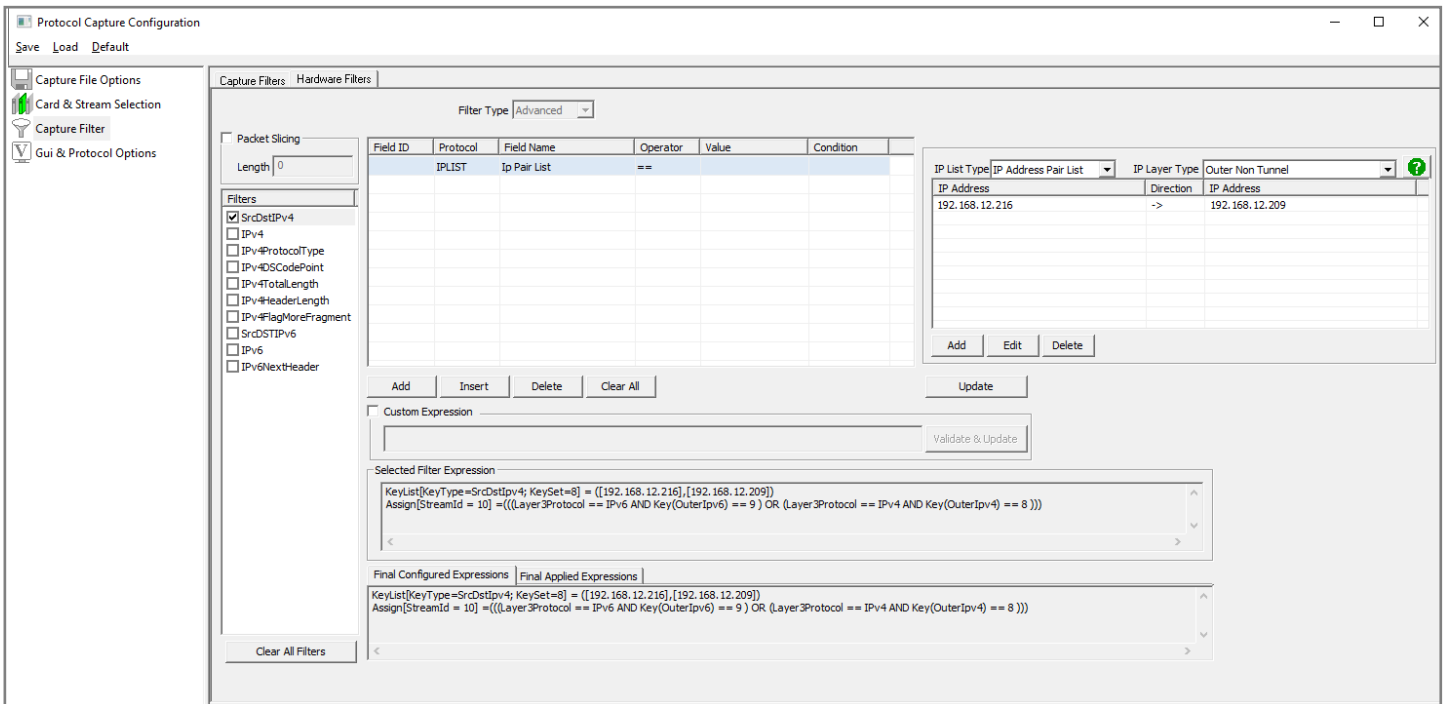
w/40 or 100 GigE (PKV124)

## Comprehensive Filtering Capabilities

The PacketScan™ HD application permits user to filter out traffic of interest at two levels prior to capture.

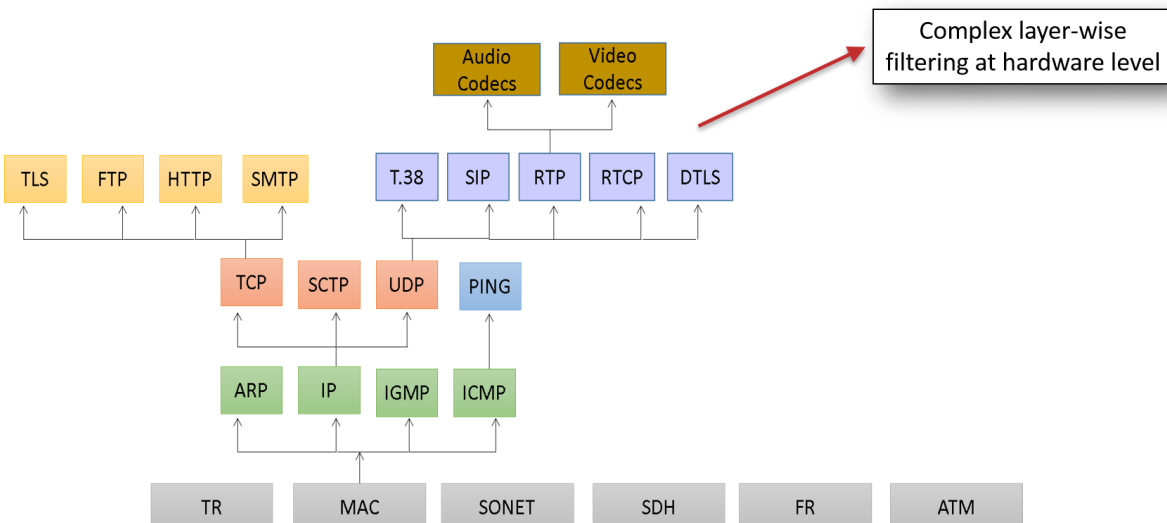
### Hardware Filter

- Permits user to filter out packets of interest at hardware level on high density network and discard unwanted traffic
- Create up to 10 user defined hardware filters to filter-out traffic based on Layer-wise parameters such as Frame size and MAC, 802.1Q (VLANs), IPv4 /IPv6, TCP, UDP, SCTP, GTP, SIP, RTP and more
- Ability to set filter conditions either before capturing the packets, or while running real-time capture
- Complex filtering capabilities at the lower hardware level result in Low CPU load on the host server
- User can create their own filters using custom filter option which provides flexibility to the user to check the fields and use the logical conditions more efficiently



### Software Filter

- Layer-wise complex software filtering further can be applied at the application level based on different signaling parameters further, with Triggers and action feature, one can perform automated actions on the filtered completed calls





## Filtering and Search

Filter and search capabilities adds a powerful dimension to the SIP analyzer. These features isolate required frames from original frames in real-time/offline. Users can record all or filtered traffic into a trace file.

Allows real-time filtering based on parameters set in Data Link layer, MAC layer, IP, TCP/UDP, and more. The offline filter allows filtering based on Frame Number, Time, Length, Message Types, and so on. Similarly, search capability helps user to search for a particular frame based on specific search criteria.

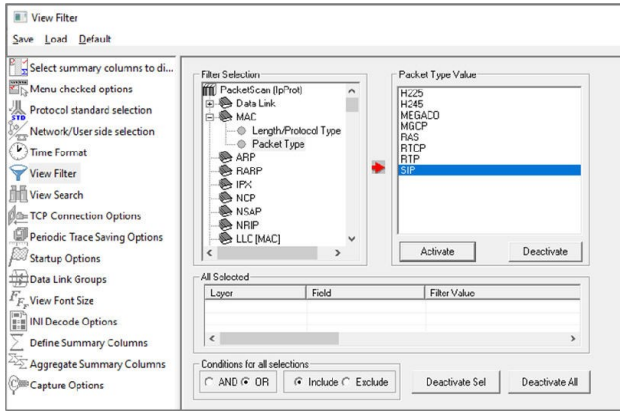


Figure: View Filter

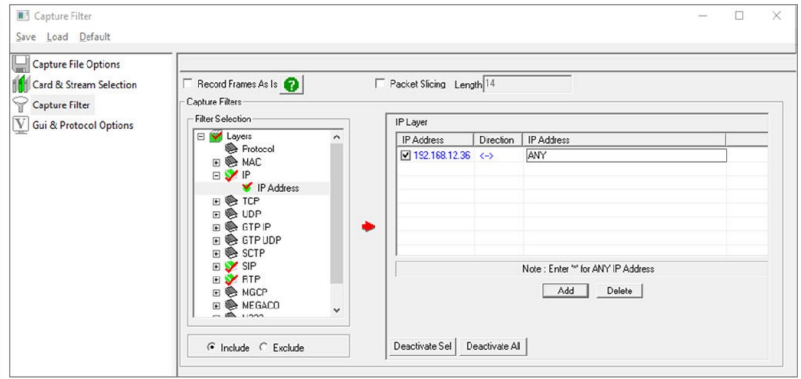


Figure: Capture Filter

## Analysis of VoIP and Wireless Calls – Summary View

### Summary View

TA Summary view displays summary of data transmission in each direction including calling number, called number, call id, start time, duration, missing packets, max/min RTD, average RTD and so on. Calls and sessions are classified as active, completed, or failed giving the user an idea about the calls and its status in the network. It includes separate statistical counts on total packets, calls, failed calls, and more, for SIP, H.323, MEGACO, RTP, GSM, luCS, and SCCP based calls.

### Call Summary – Signaling, Audio, and Video QoS Statistics

The Call Summary displays the signaling, audio, and video parameters of each call for SIP, RTP, MEGACO, H.323, GSM, luCS, and SCCP protocols. Video QoS parameters such as Codec Info, Frame Rate, Missing Packets, Delay, Gap, Video Frame Count, Out Of Sequence count, Duplicate Packets count, Media Delivery Index (MDI), etc. are displayed for all video calls with H.263 and H.264 codecs.

Call #	SSRC	Payload	Packet Rec.	Conversational MOS/R	Listening MOS/R	Packets Discard	Missing Packets	Duplicate Packets	Out Of Sequen	Average Gap(ms)	Average Delay	Average Jitter	Average Inter Arr	Cumulative Packet	Max/Min Gap	Max/Min Delay	Max/Min Jitter	Max/Min RTD(delay/ms)
1	3395468417	PCMU/8000	1273	4.20 / 93	4.20 / 93	0 / 0.00	0 / 0.00	0 / 0.00	0 / 0.00	20.01	0.00	0.00	0	0	21.65 / 18.97	1 / -1	0.68 / 0.00	0.000 / 0.000
1	3380545537	PCMU/8000	1269	4.20 / 93	4.20 / 93	0 / 0.00	0 / 0.00	0 / 0.00	0 / 0.00	20.01	0.00	0.00	0	0	21.61 / 18.81	1 / -1	0.68 / 0.00	0.130 / 0.115

Signaling Parameters	Value	Audio Parameters	Value	Video Parameters	Value
Caller	0001@192.168.1.200	Sic RTP Channel	192.168.1.200...	Sic Video Channel	
Callee	0001@192.168.1.103	Sic Media Type	PCMU/8000	Sic Media Type	
CallId	GLPG-4836337...	Sic SSRC	3395468417	Sic SSrc	
Call Status	Terminated	Sic Packets Count	1273	Sic Packets Count	
Call Initiated Time	2011-02-10 16:...	Sic Missing Packets / (%)	0 / 0.00	Sic Missing Packets / (%)	
Call Established Time	2011-02-10 16:...	Sic Duplicate Packets / (%)	0 / 0.00	Sic Duplicate Packets / (%)	
Call Stop Time	2011-02-10 16:...	Sic Out of Sequence Packets / (%)	0 / 0.00	Sic Out of Sequence Packets / (%)	
Call Duration	00:00:25.489	Sic Conversational MOS/R-Factor	4.20 / 93	Sic Video Frame count	
Call Terminator	Caller	Sic Listening MOS/R-Factor	4.20 / 93	Sic Frame Rate(Frames/sec)	
Call Failure Reason		Sic Discarded Packets / (%)	0 / 0.00	Sic AvgDelay	
Session Request Delay (msec)	1.669	Sic Average Inter-Arrival (RTCP)	0.00	Sic AvgGap	
Session Disconnect Delay (msec)	0.905	Sic Average Jitter	0.00	Sic MDI (DF-MLR)	
Post Pickup Delay (msec)	128.905	Sic Average Delay	0.00	Sic AvgMDI(DF-MLR)	
Total Signaling Frames	7	Sic Average Gap	20.01	Dest Video Channel	
		Dest RTP Channel	192.168.1.103...	Dest Media Type	
		Dest Media Type	PCMU/8000	Dest SSrc	
		Dest SSRC	3380545537	Dest Packets Count	
		Dest Packets Count	1269	Dest Missing Packets / (%)	
		Dest Missing Packets / (%)	0 / 0.00	Dest Duplicate Packets / (%)	
		Dest Duplicate Packets / (%)	0 / 0.00	Dest Out of Sequence Packets / (%)	
		Dest Out of Sequence Packets / (%)	0 / 0.00	Dest Video Frame count	
		Dest Conversational MOS/R-Factor	4.20 / 93	Dest Frame Rate(Frames/sec)	
		Dest Listening MOS/R-Factor	4.20 / 93	Dest AvgDelay	

Figure: Call Summary, Audio and Video Statistics



## Packet Data Analysis (PDA)

### Features

- Call Quality Of Service (QoS) for all calls with E-Model based (G.107) Mean Opinion Score [MOS (ITU-T, G.107, E-model)] and R-factor with individual and summary statistics presented in graphical and tabular formats
- Provision for H.263+ and H.264 video capture and video conference monitoring capability
- Calculates minimum, maximum, and average round trip delay values for SIP calls
- Supports decoding of **AMR** and **AMR\_WB** codec with **IuUP** Header
- Save calls in **HDL**, **PCAP**, or **PCAPNG** file format for further analysis
- Ability to copy the cell value to clipboard (Notepad)
- The PDA Summary View can also export all terminated call details as a text file (CSV format) during the live capture. This feature requires activating the Export Terminated Calls option from PDA prior to live capturing
- This structured text file can be imported into Excel® using a custom add-in (**Excel-Dashboard-Tool-IP.xlsm**) to generate different chart types such as call volumes, call duration, call failure causes, CMOS, LMOS, packet loss and more
- Individual and summary statistics presented in graphical and tabular formats
- Graphs are provided for key statistics for network monitoring and troubleshooting. Graphs available include – Active Calls, Average Jitter, E-Model MOS/R-Factor/Packets Discarded, RTP Packets Summary, ladder diagram for T.38 based fax calls and call signaling, Gap, Jitter, Gap/Jitter Distribution, Wave and Spectral Display for media stream analysis, VoIP calls and more
- Displays a summary of signaling, audio, and video parameters such as Source/Destination Video Channels, Media Type, SSRC, Average Delay/Gap, Packet Counts, Media Delivery Index and Frame Rate for all video calls
- Calls and sessions are classified as active, completed, or failed giving the user an idea about the calls and its status in the network
- Filter CDRs (Call Detail Records) based on parameters such as caller, time, message count, etc.
- Generates VoIP Key Performance Indicators (KPI) Reports: Call Success Ratio, Calls Per Second, Post Dial Delay, Error Code Distribution, Answer Seizure Ratio, and Call Duration
- Creates SIP Registration KPI Reports: Register messages per sessions ,Registrar(s) distribution, Registration(s) vs Deregistration(s) Over Time, Error code distribution
- Export KPI Report in PDF Format
- Generates alert summary when particular vital parameters go beyond a specified value

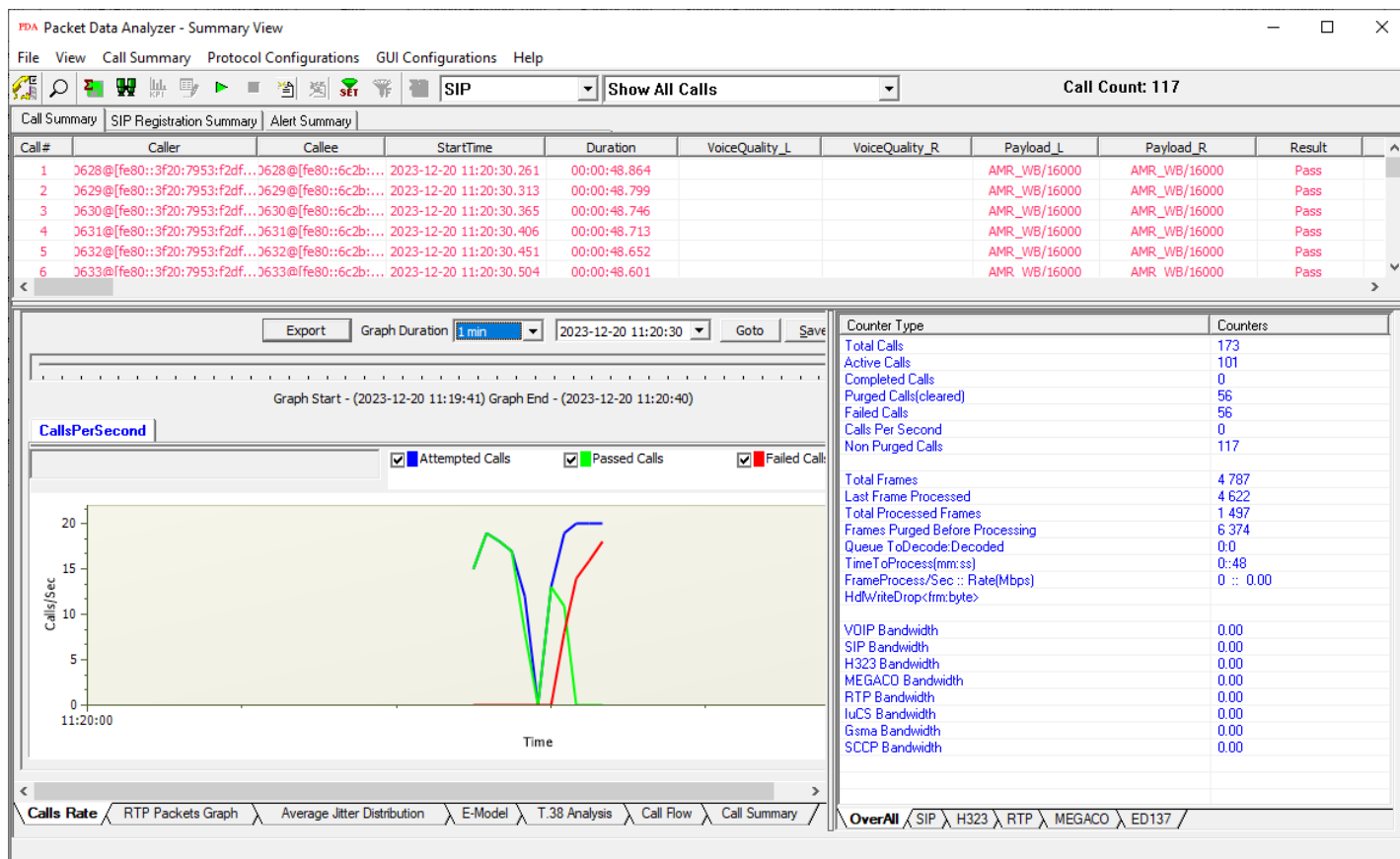


Figure: Call Summary View in PDA

# PDA Graphs

## Calls Rate Graph in PDA – Summary View

**Calls Rate** – A line graph, depicting the Number Of Calls Vs Time.  
**Average Jitter Distribution** – Distribution of the Average Jitter values across the Total Sessions.

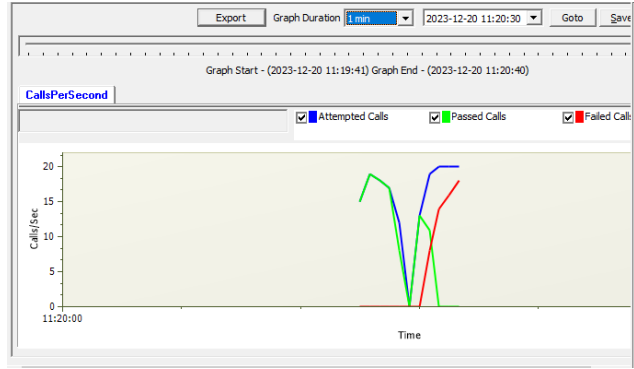
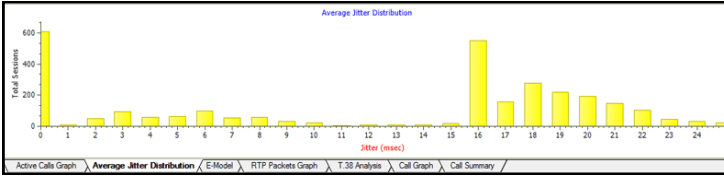


Figure: Average Distribution and Calls Rate Graphs

**E-model** - This graph provides R-factor, MOS and packets discarded against number of sessions- all these three graphs show statistics of terminated calls.

- **R-Factor** – A bar Graph that plots R-Factor across No of Sessions
- **MOS** – A bar Graph that plots Mean Opinion Score values across No. of Sessions
- **Packets Discarded** – A bar Graph that plots Packets Discarded across No. of Sessions
- **RTP Packets Graph** – Plots and compares out of ordered packets, missing packets and duplicate packets against Total Audio Packets

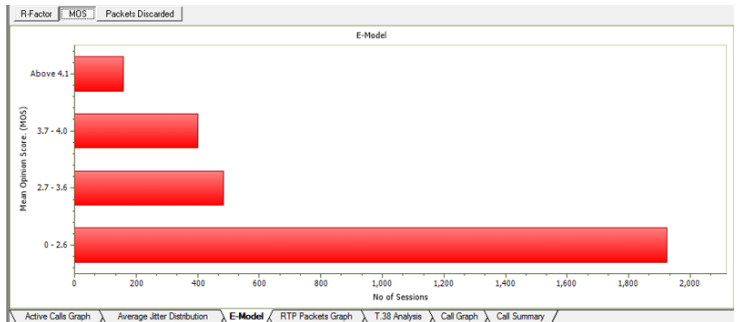


Figure: E-Model Graph

**T.38 Analysis** - Fax (T.38 data) over VoIP monitoring and decoding capability.

**Call Flow** - Displays the message sequence of protocols such as SIP, SIP ED137B, MEGACO, and H.323 captured VoIP calls.

Figure: FAX Call Flow

Figure: SIP Call Graph

# Analysis of VoIP and Wireless Calls – Detail View

## Detail View

This display assists in any comparisons that are to be made between the two RTP sessions of a call. Each frame of the selected session is dissected and its contents are displayed in a tabular form for easier viewing and comparisons. Vital aspects from the RTP frame needed for close analysis are included in the table.

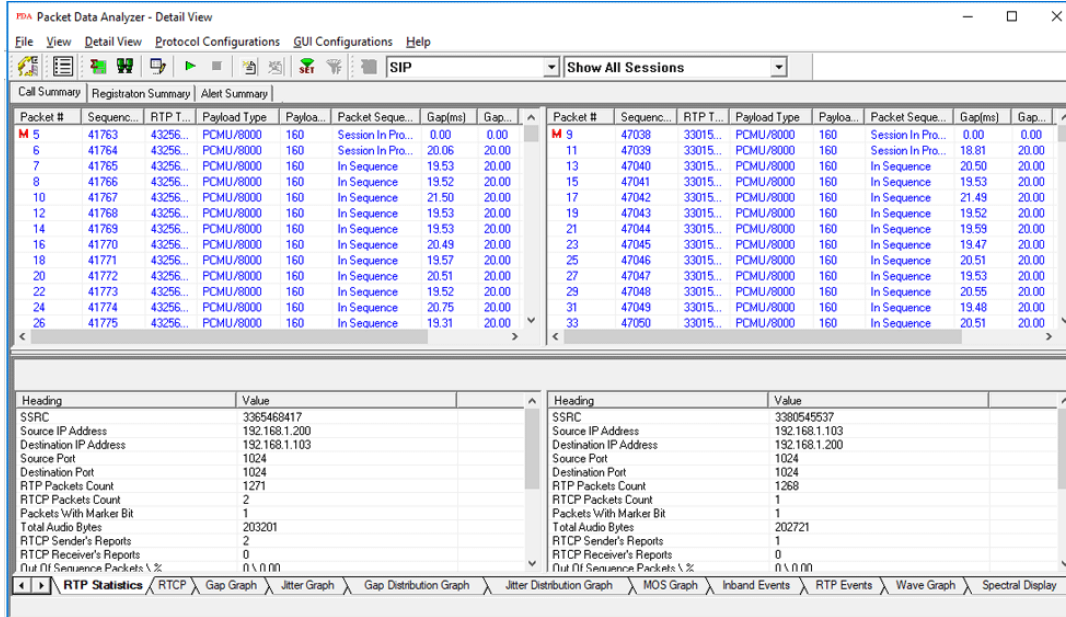


Figure: Traffic Analyzer Detail View

## Graphs in Detail View

**Gap/Jitter graphs** - Plots the Gap (in milliseconds)/Jitter versus the packet number.

**Gap Distribution Graph** - Number of packets with a particular value of gap is plotted against the (gap) value.

**Jitter Distribution Graph** - Number of packets with a particular value of jitter is plotted against the jitter value.

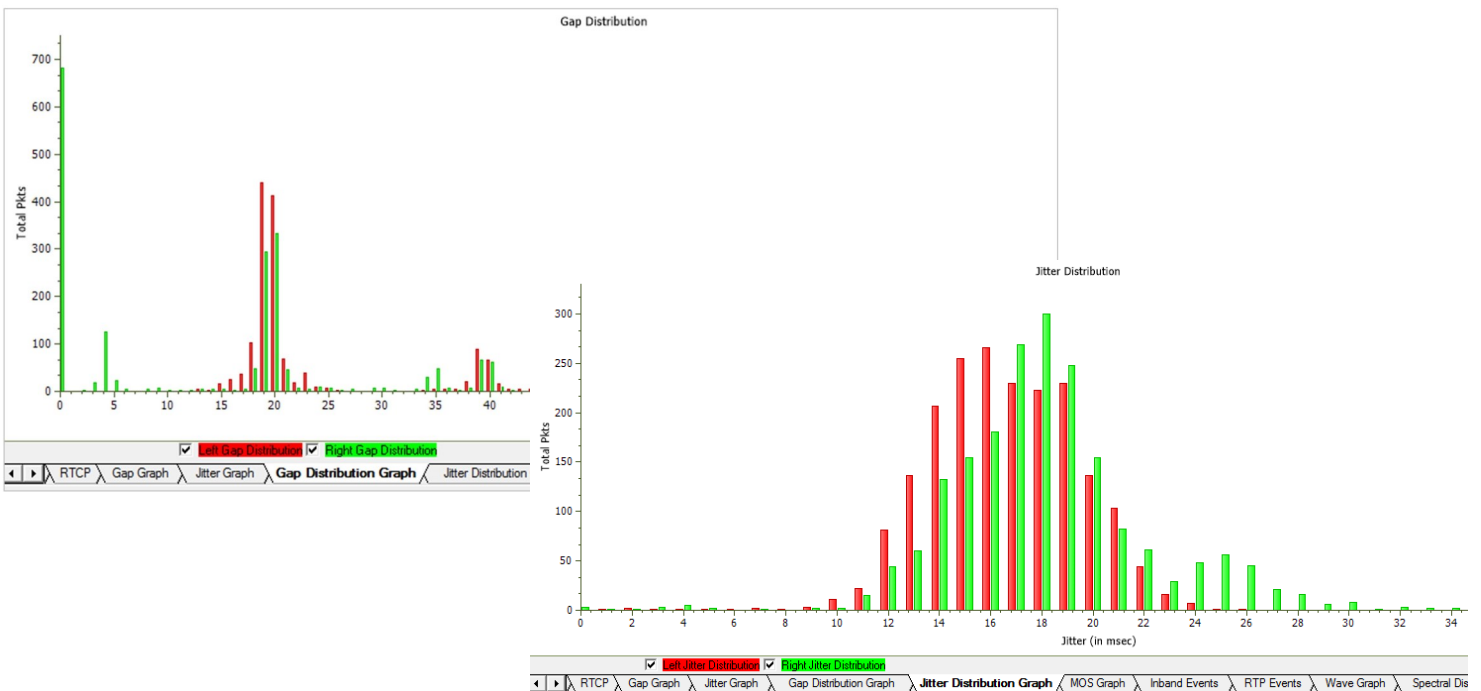


Figure: Gap/Jitter Distribution Graph

## Analysis of VoIP and Wireless Calls – Detail View (Contd.)

**MOS Graph** – Plots Mean Opinion Score values throughout the duration of the call.

**Wave graph** – Displays the amplitude of the incoming signal in a selected call as a function of time.

**Spectral Display** – Displays the power of incoming signal while the capturing is going on as a function of frequency.

**Degradation Factor** – A pie chart plots and compares different statistics such as Good Quality, Packets discarded, Echo level, Packet loss, and Regency against total Packets for each individual sessions.

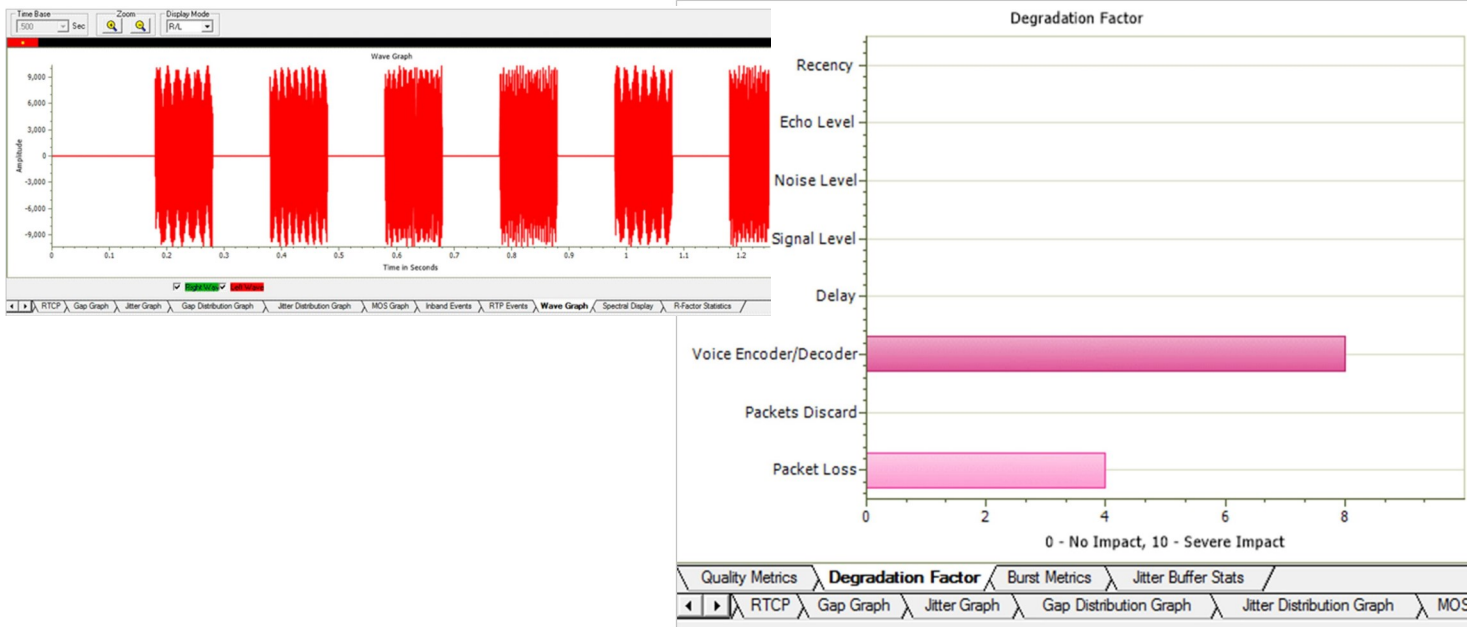


Figure: Wave Graph and Degradation Factors

### R-Factor Statistics

**Quality Metrics based on E-model** includes R-Factor and MOS Factor. **R-Factor** bar graph will display statistics such as R Listening, R Conversational, R-G107, and R-Nominal values.

**MOS Factor** bar graph will display statistics such as MOS CQ, MOS PQ, and MOS Nominal values during a call.

**Jitter Buffer Statistics** – A pie chart plots and compares packets received, packets discarded and packets lost against total Packets for each individual sessions. Also provides a tabular data on average.

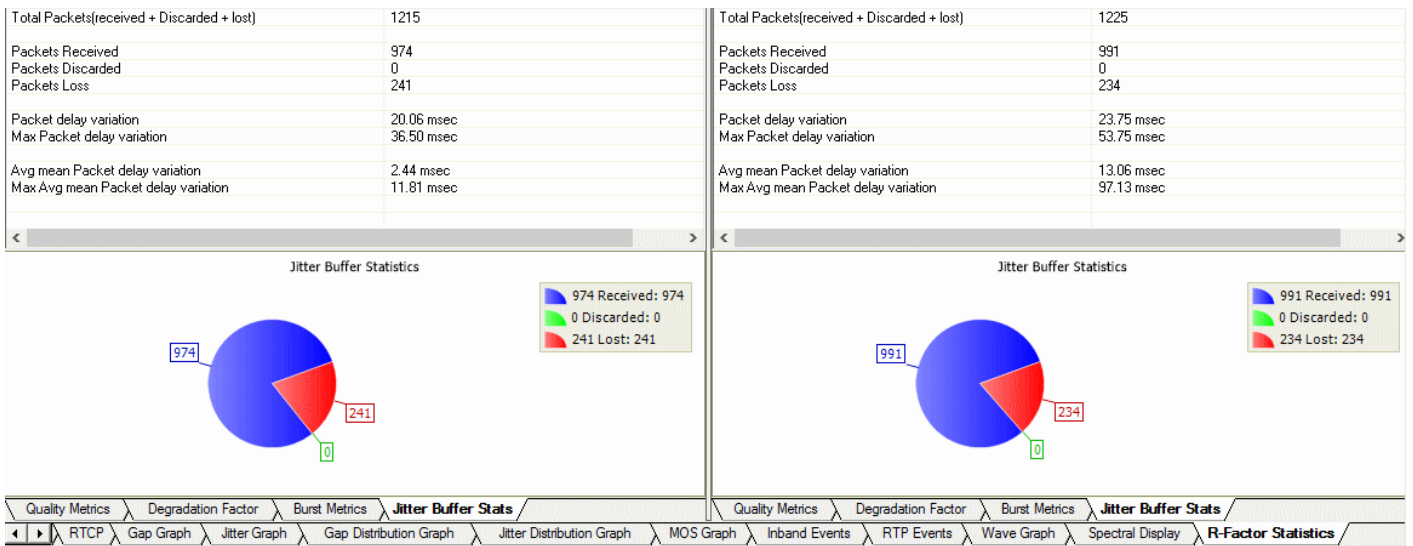


Figure: Jitter Buffer Statistics

## Other Features

### Play Audio and Write to File

The Play Audio plays the selected call to the PC speaker. Write to File is similar to the Play Audio option. The basic difference being that the output is written to a file instead of playing to the speaker. PDA can monitor video calls and display both audio and video RTP streams in summary view.

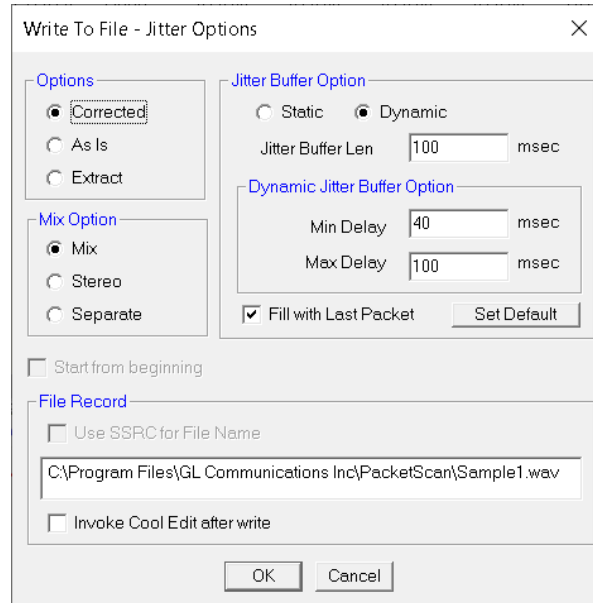


Figure: Write to File

### Save Call

The Save Call feature enables the user to save a particular call either in GL's proprietary \*.HDL file format or in Ethereal \*.PCAP file format or \*.PCAPNG file format. Call Summary details could also be saved for a particular call as a \*.rtf file. This is especially useful to get data from real-time traffic locations to the lab for detail analysis of a flawed call.

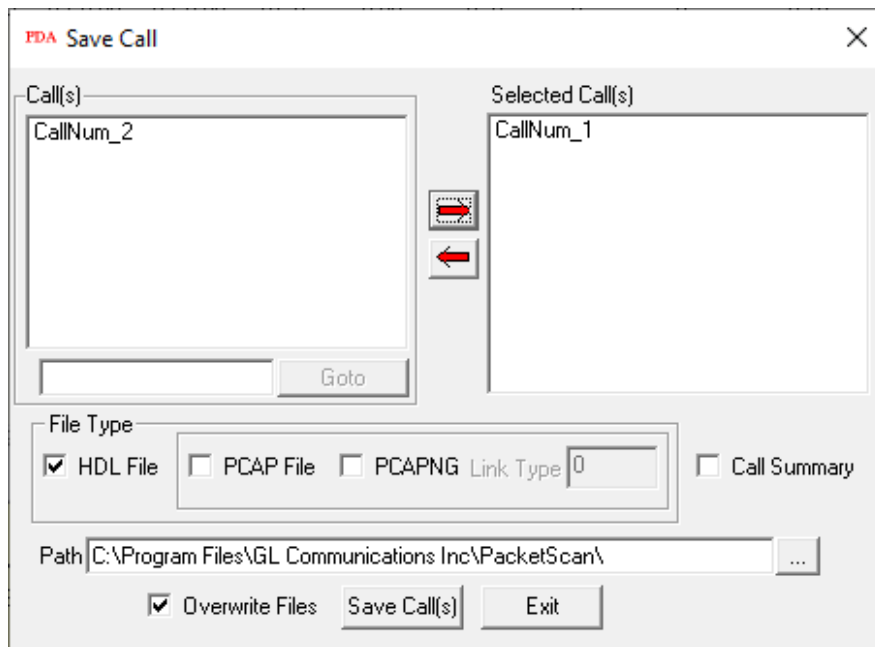


Figure: Save Call

## Other Features (Contd.)

### RTP/RTCP Statistics, Inband Events, Outband Events

The user can get the complete details of a single selected call such as total packets count, SSRC, RTP packet count, RTCP packet count, total Audio bytes, and more.

Inband Events display Inband DTMF and MF digits as they are received with details such as Timestamp, Type, Event, On-Time, Power, and Frequency. Outband Events display RTP events as per RFC 2833 or 4733 with details such as Timestamp, Event, Power, and Duration.

### Triggers and Action Settings

Triggers and Action Settings allow the user to filter calls based on certain SIP, RTP, MEGACO, H.323, GSMA, and luCS parameters followed by a set of actions for the completed calls. The filtered file can be saved in either GL's proprietary HDL file, Ethereal PCAP, or PCAPNG file format. It extracts fax image for the selected fax calls. Additionally, a summary of call signaling and audio parameters can be saved as \*.rtf file, or generate Call Detail Records in CSV file format along with voice files for each direction. The CSV files can be used for further analysis and retrieval of **calls of interest**.

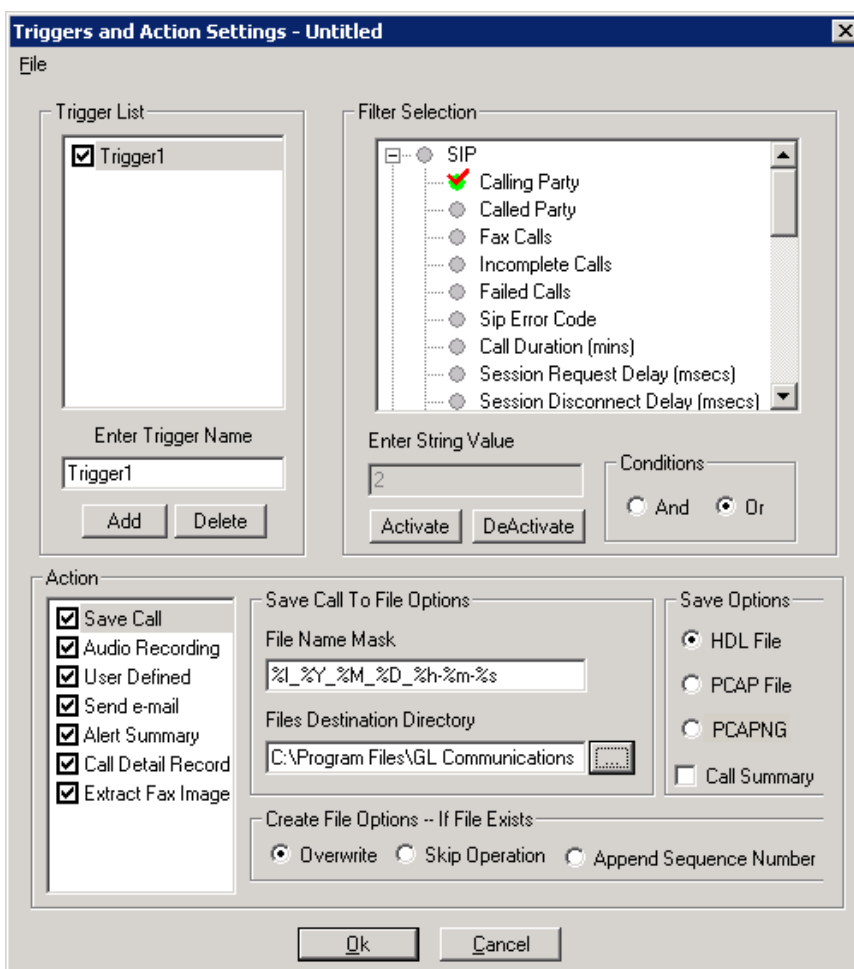


Figure: Trigger and Action Settings

## Other Features (Contd.)

### Alert Summary

Generates alerts when particular vital parameters go beyond a specified value and display in Alert Summary table. The user can specify the criteria based on which the alerts are to be generated. The tab provides an active list of the alerts that have occurred during the test session in tabular columns.

Call#	Protocol	Message	Type	Threshold	Value	Caller	Callee	CallID
1	SIP	mos value between 3 to 4	Warning	2.00-4.00	3.57	0005@192.168.1.236	0005@192.168.1.234	GLPG143457205760
2	SIP	mos value between 3 to 4	Warning	2.00-4.00	3.39	0006@192.168.1.236	0006@192.168.1.234	GLPG143617205763
3	SIP	mos value between 3 to 4	Warning	2.00-4.00	2.77	0008@192.168.1.236	0008@192.168.1.234	GLPG143617205769
3	SIP	mos value between 1 to 2.5	Critical	1.00-2.50	2.36	0008@192.168.1.236	0008@192.168.1.234	GLPG143617205769
4	SIP	mos value between 3 to 4	Warning	2.00-4.00	3.48	0009@192.168.1.236	0009@192.168.1.234	GLPG143617205772
5	SIP	mos value between 3 to 4	Warning	2.00-4.00	3.30	0011@192.168.1.236	0011@192.168.1.234	GLPG14377205778
6	SIP	mos value between 3 to 4	Warning	2.00-4.00	2.77	0012@192.168.1.236	0012@192.168.1.234	GLPG143927205781
6	SIP	mos value between 1 to 2.5	Critical	1.00-2.50	2.31	0012@192.168.1.236	0012@192.168.1.234	GLPG143927205781
7	SIP	mos value between 3 to 4	Warning	2.00-4.00	2.27	0001@192.168.1.231	0001@192.168.1.237	GLPG13407127763982
7	SIP	mos value between 1 to 2.5	Critical	1.00-2.50	2.27	0001@192.168.1.231	0001@192.168.1.237	GLPG13407127763982
8	SIP	mos value between 1 to 2.5	Critical	1.00-2.50	1.47	0002@192.168.1.231	0002@192.168.1.237	GLPG13417127763987
9	SIP	mos value between 1 to 2.5	Critical	1.00-2.50	1.04	0003@192.168.1.231	0003@192.168.1.237	GLPG13425667763992

Figure: Alert Summary View

### Registration Summary

- Provides the registration summary of each SIP registration including the user agent, registrar, status, registered time, expiry time, time to live, remaining time, registration request delay (RRD), and Re-registration attempts
- Provides graphical view of the active registrations and registration trace of each registration

Call#	Method	RegisterRequestTime	UserAgent	Registrar	Result	Status	ErrorCode	CallID	RegisteredTime	Requests
0	Register	2023-11-15 11:18:1...	0001@192.168.12.112	192.168.12.112	Passed	Registered	0	GL-MAPS-16-33884...	2023-11-15 11:18:1...	1
1	DeRegister	2023-11-15 11:18:2...	0001@192.168.12.112	192.168.12.112	Passed	De-Registered	0	GL-MAPS-16-33884...		1
2	Register	2023-11-15 11:19:1...	0001@192.168.12.112	192.168.12.112	Failed	Failed	404	GL-MAPS-23-33937...		1
3	Register	2023-11-15 11:19:2...	0001@192.168.12.112	192.168.12.112	Failed	Failed	403	GL-MAPS-28-33949...		1
4	Register	2023-11-15 11:19:4...	0001@192.168.12.112	192.168.12.112	Failed	Failed	423	GL-MAPS-33-33971...		1

```

===== SIP Layer =====
REGISTER sip:192.168.12.112 SIP/2.0
Via: SIP/2.0/UDP 192.168.12.113:5060;branch=z9hG4bK-19-33885024-9508-9928
Route: <sip:192.168.12.112:5060;lr>
Max-Forwards: 70
Allow: INVITE, BYE, CANCEL, ACK, INFO, PRACK, OPTIONS, SUBSCRIBE, NOTIFY, REFER, REGISTER
From: 0001 <sip:0001@192.168.12.112>;tag=FromTag-17-33884996-9506-9928
To: <sip:0001@192.168.12.112>
Call-ID: GL-MAPS-16-33884996-9505-9928@192.168.12.113
CSeq: 1 REGISTER
Expires: 120
Contact: 0001 <sip:0001@192.168.12.113>
Content-Length: 0
    
```

Figure: Registration Summary

## Filtered Calls using Expressions

The PacketScan™ analyzer offers the option to filter call detail records based on parameters such as caller, time, and message count. The expression supports the following mathematical operators: ==, <=, >=, !=, <, >, &&, ||.

For example, the filter expression ""ErrorCode==400 || ErrorCode>600" will display calls with ErrorCode equal to 400 and calls with ErrorCode greater than 600 as shown in the below screenshot.

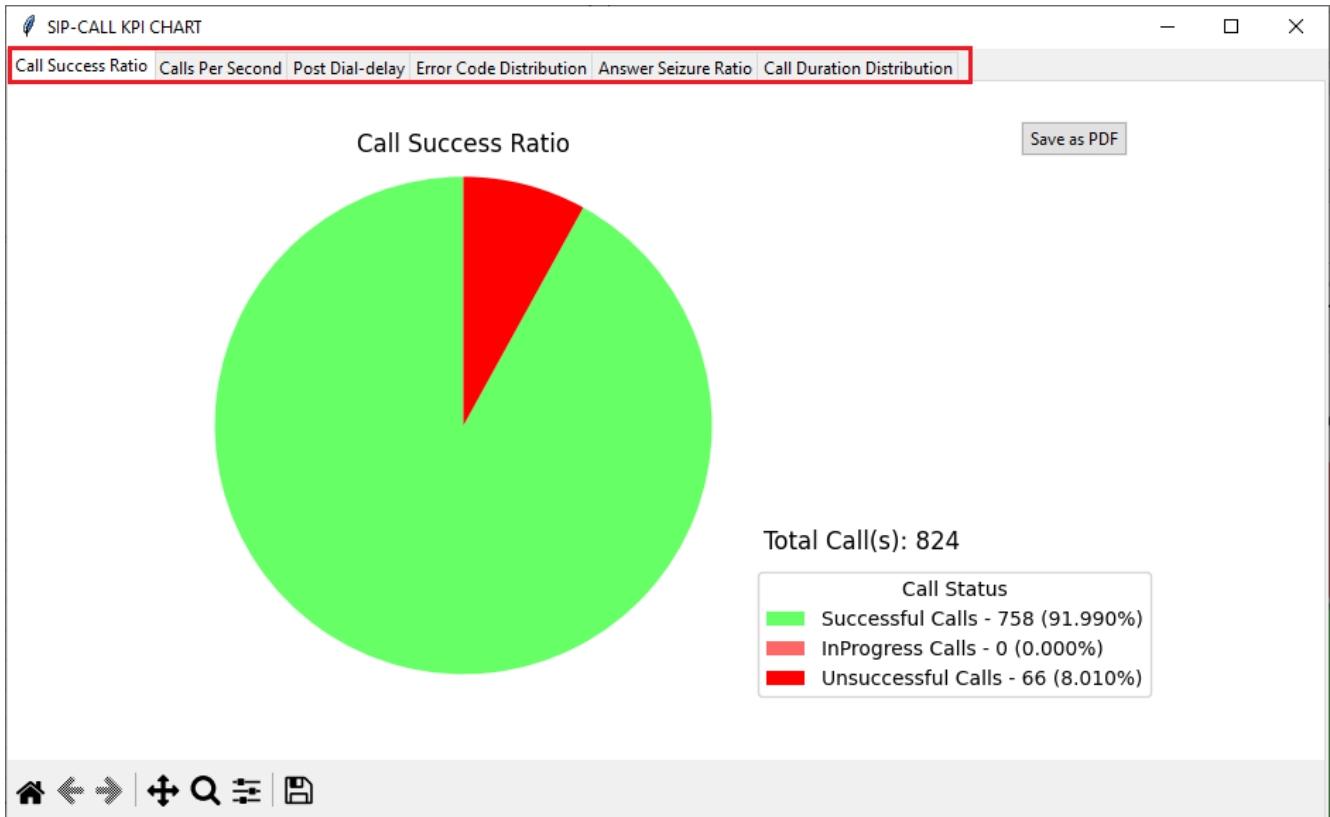
Payload_R	ErrorCode	FailureCause	CallID	EndTime	PostDialDelay	SessionDisconnectDe
	400	5	GL-MAPS-2654-766727097-26124-3688@192.168.12.92	2023-06-01 15:02:12.275	9	0
	603	4	GL-MAPS-2679-766728649-26314-14696@192.168.12.92	2023-06-01 15:02:13.828	9	0
	604	4	GL-MAPS-2677-766728698-26320-13540@192.168.12.92	2023-06-01 15:02:13.879	19	0
	606	4	GL-MAPS-2677-766728748-26326-14572@192.168.12.92	2023-06-01 15:02:13.919	9	0
	400	5	GL-MAPS-2685-766728798-26332-6156@fe80::3f20:7953:f2df:f26a	2023-06-01 15:02:13.973	18	0
	606	4	GL-MAPS-2709-766730449-26530-14696@fe80::3f20:7953:f2df:f26a	2023-06-01 15:02:15.632	9	0

Figure: Displaying Filtered Calls using Expressions

## KPI Report for SIP Calls

The SIP Call Summary KPI Report includes KPIs for the following:

- **Call Success Ratio:** Displays graph for "Successful" and "Unsuccessful Calls," including counts and percentages (%)
- **Calls Per Second:** Shows graph "Total," "Passed," and "Failed Calls per second."
- **Post Dial Delay:** Shows delay counts in milliseconds (0-250ms, 251-500ms, etc.)
- **Error Code Distribution:** Lists Top 10 Call Failure Causes with counts and percentages(%)
- **Answer Seizure Ratio:** Shows "Answered" and "Unanswered Calls," with counts and percentages(%)
- **Call Duration Distribution:** Provides call counts for different durations (0-1 sec, 1-10 sec, etc.)





## KPI Report for SIP Registration

The SIP Registration Summary KPI Report includes KPIs for the following:

- **Register Messages per Session:** Shows a graph for the distribution of Register Requests
- **Registrar(s) Distribution:** Displays a graph for the number of Registration sessions per Registrar
- **Registration(s) vs Deregistration(s):** Illustrates a graph comparing the distribution of Register and Deregister counts with percentages (%)
- **Registration(s) Over Time:** Show the graphs for "Successful," "Failed," and "Total Attempts" per second
- **Deregistration(s) Over Time:** Displays a graph for "Successful" and "Total Attempts" per second
- **Registration(s) - Deregistration(s) Over Time:** Shows a graph for overall "Register & Deregister attempts," "Register & Deregister passed," and "Register & Deregister failed" attempts per second Register messages per session

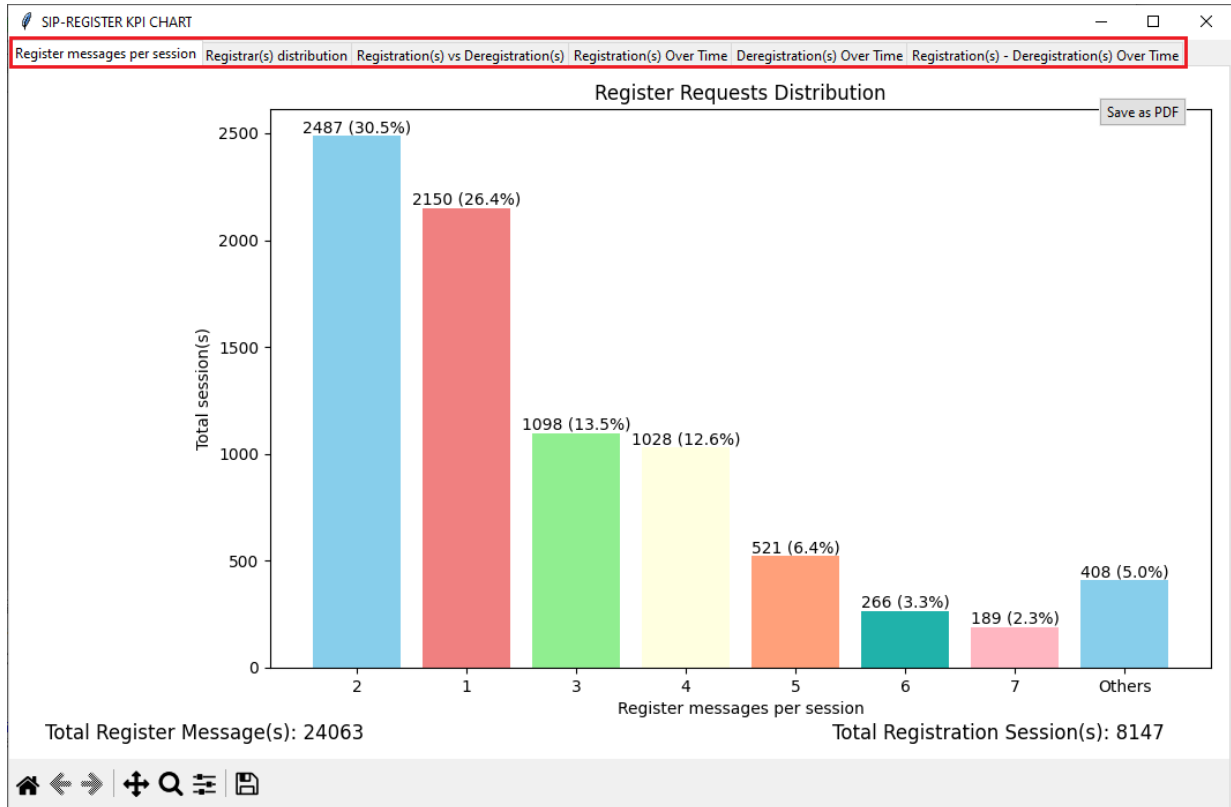


Figure: SIP Registration KPI Chart

## Buyer's Guide

Item No	Product Description
<a href="#">PKV120</a>	PacketScan™ HD – High Density IP Traffic Analyzer w/ 4x1GigE - includes PKV100 – Online (not Offline) for temporary audio codec support
<a href="#">PKV120p</a>	PacketScan™ HD w/4 x 1GigE - Portable
<a href="#">PKV122</a>	PacketScan™ HD–High Density IP Traffic Analyzer w/ 2x10GigE includes PKV100 – Online (not Offline) for temporary audio codec support )
<a href="#">PKV122p</a>	PacketScan™ HD w/2 x 10 GigE - Portable
<a href="#">PKV124</a>	PacketScan™ HD – High Density IP Traffic Analyzer w/ 40/100 GigE
<a href="#">PKV124P</a>	PacketScan™ HD – High Density IP Traffic Analyzer w/ 40/100 GigE - Portable
<a href="#">PKV121</a>	PacketScan™ FB - (Offline Analyzer)

Item No	Related Software
<a href="#">PKV112</a>	5G Analyzer (Optional with PacketScan™)
<a href="#">PKV113</a>	Offline 5G Analyzer (Optional with PacketScan™ and NetSurveyorWeb™)
<a href="#">PKV105</a>	SIGTRAN Analysis
<a href="#">PKV103</a>	IP Based GSM and UMTS Analysis
<a href="#">PKV110</a>	IMS Protocol Decodes (Optional with PacketScan™)
<a href="#">PKV107</a>	LTE (Long Term Evolution) Analyzer, requires PKV100
<a href="#">PKV104</a>	FaxScan™ – Decodes T.38 Fax images in TIFF format from captured PCAP files



**GL Communications Inc.**

818 West Diamond Avenue - Third Floor, Gaithersburg, MD 20878, U.S.A  
 (Web) [www.gl.com](http://www.gl.com) - (V) +1-301-670-4784 (F) +1-301-670-9187 - (E-Mail) [info@gl.com](mailto:info@gl.com)

## Buyer's Guide (Contd.)

Item No	Related Software
<a href="#">PCD103</a>	AMR Narrowband Codec for PacketScan™
<a href="#">PCD107</a>	Optional Codec – AMR Wideband
<a href="#">PCD104</a>	EVRC Codec for PacketScan™
<a href="#">PCD105</a>	EVRC-B Codec for PacketScan™
<a href="#">PCD106</a>	EVRC-C Codec for PacketScan™
<a href="#">PKV170</a>	NetSurveyorWeb™
PKV171	Network Surveillance Agent Toolkit
PKV172	Network Surveillance for GSM – GPRS Systems
<a href="#">PKS118</a>	MAPS™ ED137 Radio
<a href="#">PKS119</a>	MAPS™ ED137 Telephone (Includes PKS102)
<a href="#">PKS117</a>	MAPS™ ED137 Recorder (Includes PKS102)
PKS107	RTP EUROCAE ED137
<a href="#">PKV169</a>	NetSurveyorWeb™ Lite
<a href="#">PKV 400</a>	TCP Analytics

For more details, refer to [PacketScan™ HD - Network Monitoring Appliance](#) webpage.



**GL Communications Inc.**

818 West Diamond Avenue - Third Floor, Gaithersburg, MD 20878, U.S.A  
 (Web) [www.gl.com](http://www.gl.com) - (V) +1-301-670-4784 (F) +1-301-670-9187 - (E-Mail) [info@gl.com](mailto:info@gl.com)