

**MAPS™ LTE eGTP is licensed either through software licensing or USB hardware dongle. Follow the procedures below as per your purchase order.**

## **System Requirements**

- Windows® 10 and above Operating System (**64 bit Only**).
- Core i3 to i7 (or equivalent), 8 GB Memory, NIC cards, and USB Ports.
- For functional verification of **MAPS™ LTE eGTP** application requires a system with two NIC cards.

## **Software based licensing (for evaluation only)**

- In the case of software-based licensing, the software executables, license installer, and documents can be downloaded from the software licensing web portal (refer to email notification from GL Communications).
- Follow the instructions in the <https://www.gl.com/ses/download/GL-Software-License-Evaluation-Instructions.pdf> to install software license.
- To verify that the purchased licenses are installed correctly, open any web browser from the system on which the software license is installed and type the URL "<http://localhost:1947/int/products.html>". Click on **Features** and confirm that the following **Product licenses** are listed:
  - **PKS142** - MAPS LTE eGTP
  - **ETH101** - MobileTrafficCore-GTP
  - **ETH102** - MobileTrafficCore-Gateway
  - **PKS102** - PacketGen™ RTP Soft Core
  - **PKS108** - RTP Voice Quality Measurements
  - **PCD103** - Optional Codec AMR Narrowband (**Optional**)
  - **PCD107** - Optional Codec AMR Wideband (**Optional**)
- After completing software license installation, right-click on **MAPS-LTEeGTPx64.exe** and select **Run as Administrator** option to execute the application in administrator mode. Follow the on-screen instructions to complete the software installation.
- For a basic functional verification, refer to **MAPS-LTE-eGTP-S11(S5S8)-and-Mobile-IP-Core-Quick-Verification-Guide**, **MAPS-LTE-eGTP-S11(S5S8)-with-PacketLoad-Quick-Verification-Guide**.

## **USB Dongle based licensing**

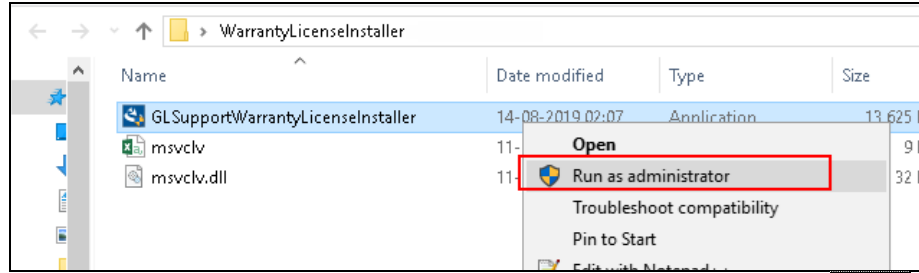
- If the software is licensed through hardware USB dongle, the shipment will contain a **USB Installation Stick** (pen drive) with necessary software executables, license installer, and documents along with USB Dongle.
- Plug-in the dongle to the USB port of the computer.
- Plug-in the USB Installation Stick (pen drive) to the PC.
- Navigate to **|GL-Dongle-LicenseInstaller** folder in installation USB stick and execute **GLLdkDongleLicenseInstaller\_x64.exe**. Follow the on-screen instructions to complete the installation.
- A **Red** light should appear on the dongle indicating that it is functioning correctly.
- User can verify if the required licenses are installed. Navigate to **C:\Program Files\GL Communications Inc\GLDONGLE** directory, execute **appl\_list.exe** and confirm that the following licenses are listed:
  - **PKS142** - MAPS LTE eGTP
  - **ETH101** - MobileTrafficCore-GTP
  - **ETH102** - MobileTrafficCore-Gateway
  - **PKS102** - PacketGen™ RTP Soft Core
  - **PKS108** - RTP Voice Quality Measurements

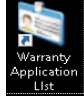
- **PCD103** - Optional Codec AMR Narrowband (Optional)
  - **PCD107** - Optional Codec AMR Wideband (Optional)
- For any issues during the installation, follow hardware dongle licensing procedure mentioned in the <https://www.gl.com/Brochures/Brochures/Installation-Instructions-for-Dongle-Programs.pdf>.

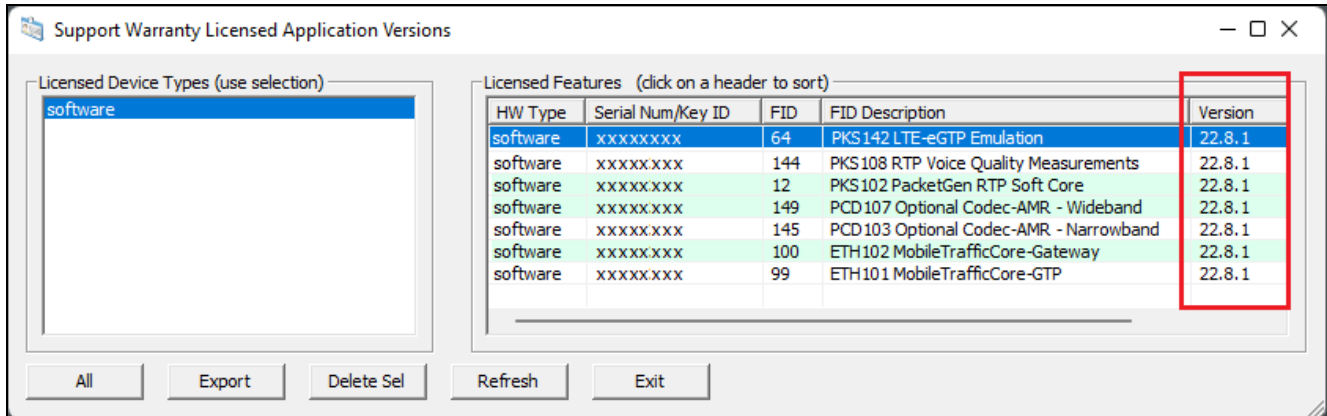
### Warranty License Installer

Follow the below steps to install the Warranty license.

- Navigate to root directory in **USB installation stick** (pen drive) to **\Warranty\_LicenseInstaller** folder, execute **GLSupportWarrantyLicenseInstaller.exe**. Follow the onscreen instructions and complete the installation.



- To confirm that warranty is installed properly, double-click on **Warranty Application List** icon . This will display the list of warranty applications which are purchased.



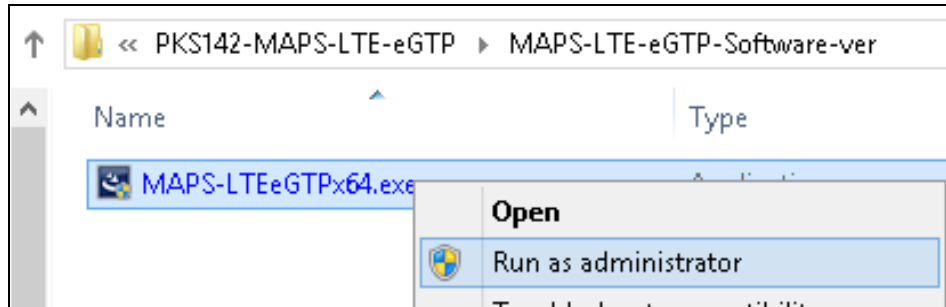
- In the **Version** column, verify the warranty expiry date to be as expected (depending on the support warranty purchased)

 **Note:**

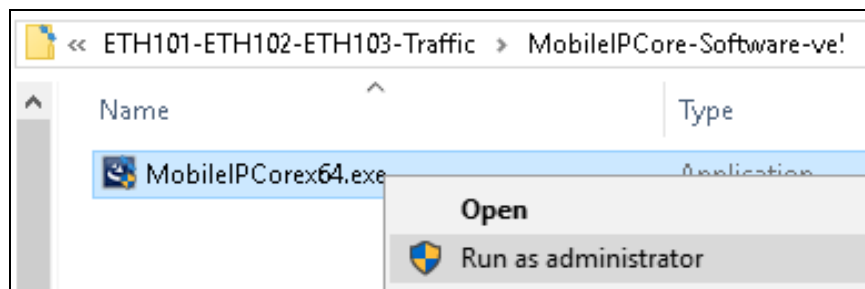
- Any latest software updates after warranty period will not be available until warranty licenses are renewed.

## Software Installation

- Navigate to **PKS142-MAPS-LTE-eGTP\MAPS-LTE-eGTP-Software-verXX** folder, right click **MAPS-LTEeGTPx64.exe** and select **Run as Administrator** option to execute the application in administrator mode. Follow the on-screen instructions to complete the software installation.



- For traffic simulation on **LTE eGTP** interfaces, execute **MobileIPCorex64.exe** from **\ETH101-ETH102-ETH103-Traffic\MobileIPCore-Software-verXX** folder in the USB installation stick. Follow the onscreen instructions and complete the server application installation.

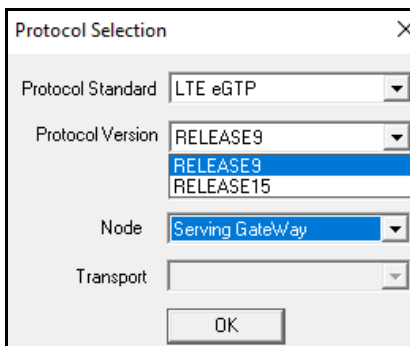


## Invoking Application

- It is recommended to reboot the system after the software installation.



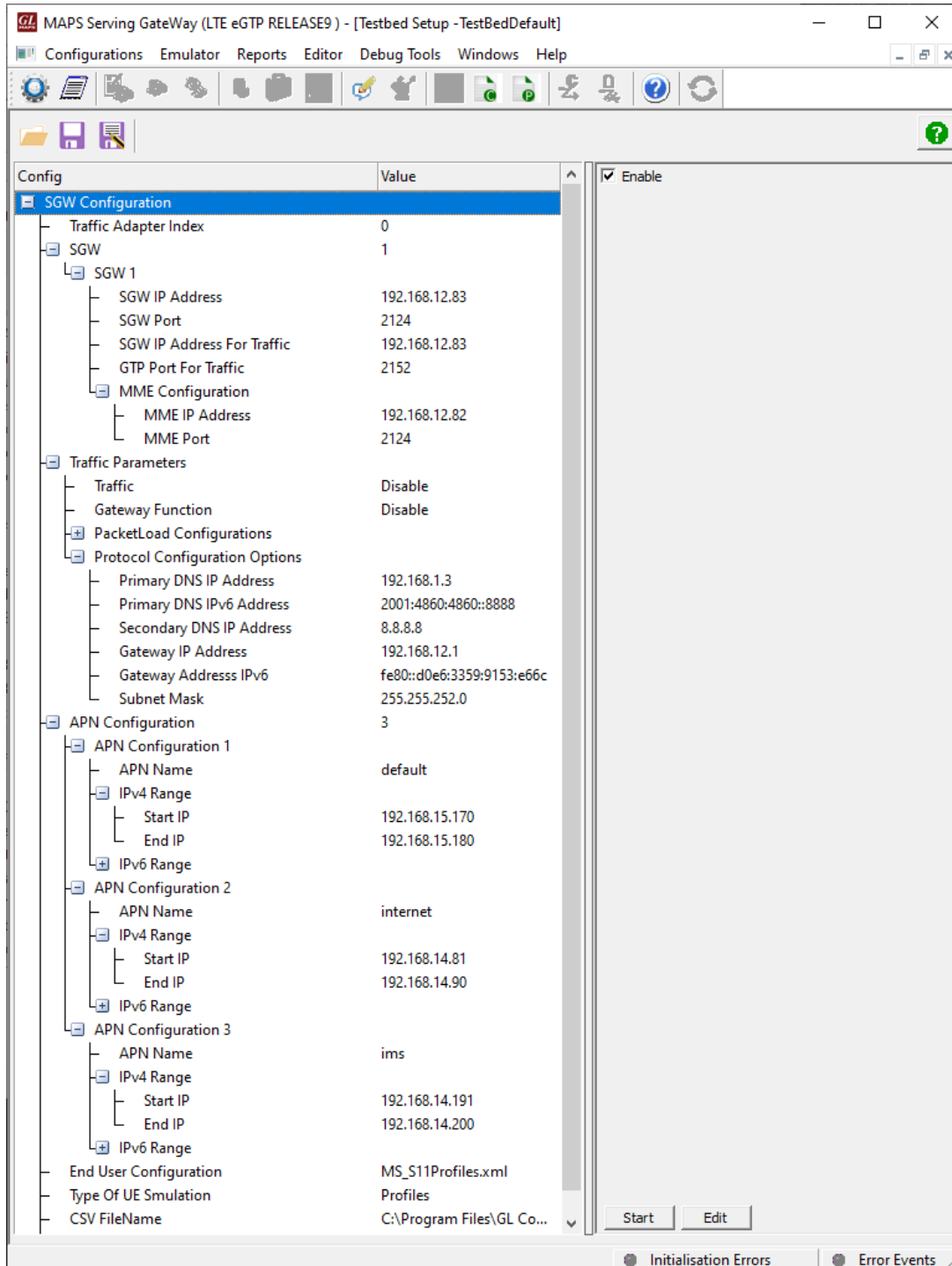
- Right-click on **MAPS LTE eGTP** shortcut icon created on the desktop and select '**Run as Administrator**'.
- The application must invoke without any errors. By default, the **Protocol Selection** window is displayed.



Note:

User can select the **Protocol Version** (Release 9 or Release 15) as per test requirements.

- Select the appropriate parameters in the **Protocol selection** window and click **OK**. The application displays the testbed setup window as shown below.



- For functional verification of **MAPS™ LTE eGTP** application, refer to [MAPS-LTE-eGTP-Quick-Verification-Guide](#).
- For functional verification of **MAPS™ LTE eGTP with Mobile Traffic Core-GTP** application, refer to [MAPS-LTE-eGTP-Mobile-Traffic-Quick-Verification-Guide](#).
- For functional verification of **MAPS™ LTE eGTP with PacketLoad** application, refer to [MAPS-LTE-eGTP-with-PacketLoad-Quick-Verification-Guide](#).