

MAPS™ ISDN SIGTRAN is licensed either through software licensing or USB hardware dongle. Follow the procedures below as per your purchase order.

## System Requirements

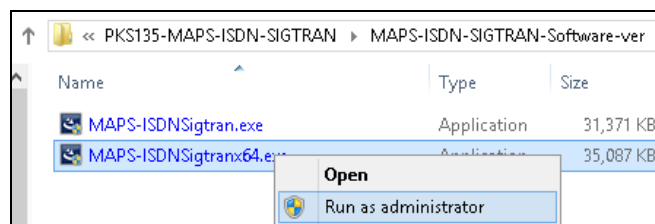
- Windows® 10 and above Operating System (64 bit Only).
- Core i7 (or equivalent), 8 GB Memory, and USB Ports.
- PCs which include GL hardware/software require Intel or AMD processors for compliance.

## Software based licensing (for evaluation only)

- In case of software-based licensing, the software executables, license installer, and documents can be downloaded from the software licensing web portal (refer to email notification from GL Communications).
- Follow the instructions in the <https://www.gl.com/ses/download/GL-Software-License-Evaluation-Instructions.pdf> to install software license.
- To verify that the purchased licenses are installed correctly, open any web browser from the system on which the software license is installed and type the URL "<http://localhost:1947/int/products.html>". Click on **Features** and confirm that the following **Product licenses** are listed:
  - PKS135 (SIGTRAN Protocol Emulation-ISDN over IP)
- After completing software license installation, right-click on **MAPS-ISDNsigranx64.exe** and select **Run as Administrator** option to execute the application in administrator mode. Follow the on-screen instructions to complete the software installation.
- For a basic functional verification, refer to **MAPS-ISDN-Sigtran-Quick-Verification-Guide**.

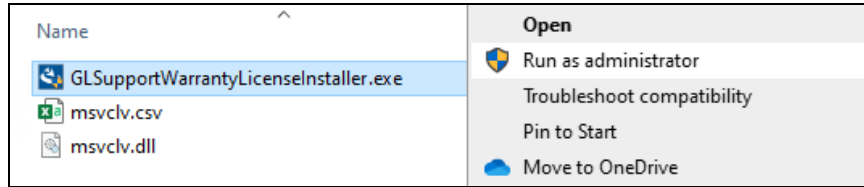
## USB Hardware Dongle based licensing


- If the software is licensed through hardware USB dongle, your shipment will contain a **USB Installation Stick** (pen drive) with necessary software executables, license installer, and documents.
- Plug-in the USB Installation Stick (pen drive) to the PC
- Navigate to **\GL-Dongle-LicenseInstaller** folder in installation USB stick and execute **GLLdkDongleLicenseInstaller\_x64.exe** (or **GLLdkDongleLicenseInstaller\_x86.exe**). Follow the on-screen instructions to complete the installation.
- For any issues during the installation, follow hardware dongle licensing procedure mentioned in the <https://www.gl.com/Brochures/Brochures/Installation-Instructions-for-Dongle-Programs.pdf>.
- Once the license installation is completed, plug the dongle to the USB port of your computer. Windows® should install all required drivers automatically. A red light should appear on the dongle indicating that it is functioning correctly from a physical point of view.
- You can verify if the required licenses are installed. Navigate to **C:\Program Files\GL Communications Inc\GLDONGLE** directory, execute **appl\_list.exe** and confirm that the following licenses are listed:
  - PKS135 (SIGTRAN Protocol Emulation-ISDN over IP)**Note:** Please verify that all licenses purchased are displayed using the **appl\_list.exe** utility.
- Navigate to folder **\PKS135-MAPS-ISDN-SIGTRAN\MAPS-ISDN-SIGTRAN-Software-verXX** folder, right click **MAPS-ISDNsigranx64.exe** and select **Run as Administrator**. Follow the onscreen instructions and complete the installation.

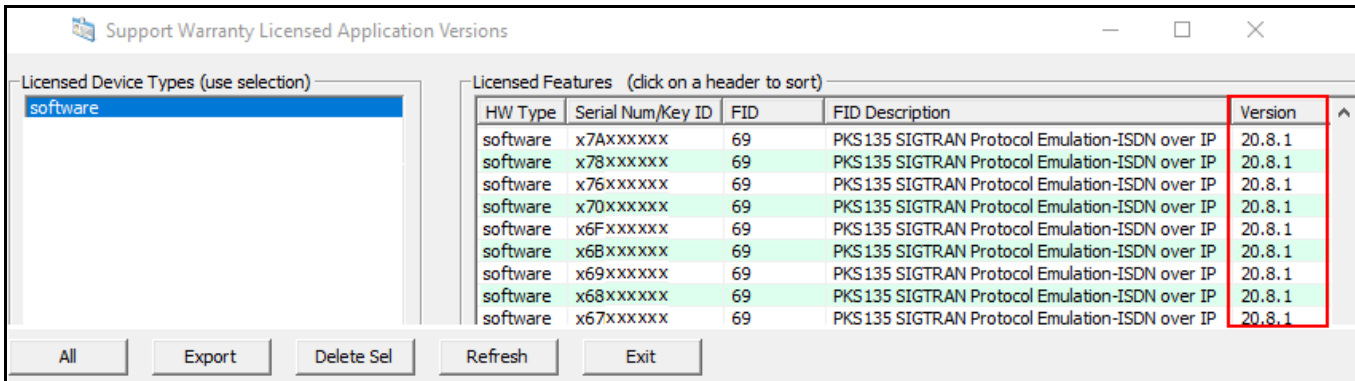


## Warranty License Installer

- Users must install the **Warranty License** for the software to run.
- Navigate to root directory in **USB installation stick** (pen drive) to **|Warranty\_LicenseInstaller** folder, execute **GLSupportWarrantyLicenseInstaller.exe**. Follow the onscreen instructions and complete the installation.



- To confirm that warranty is installed properly, double-click on **Warranty Application List** icon . This will display the list of warranty applications which are purchased.



HW Type	Serial Num/Key ID	FID	FID Description	Version
software	x7Axxxxxx	69	PKS 135 SIGTRAN Protocol Emulation-ISDN over IP	20.8.1
software	x78xxxxxx	69	PKS 135 SIGTRAN Protocol Emulation-ISDN over IP	20.8.1
software	x76xxxxxx	69	PKS 135 SIGTRAN Protocol Emulation-ISDN over IP	20.8.1
software	x70xxxxxx	69	PKS 135 SIGTRAN Protocol Emulation-ISDN over IP	20.8.1
software	x6Fxxxxxx	69	PKS 135 SIGTRAN Protocol Emulation-ISDN over IP	20.8.1
software	x6Bxxxxxx	69	PKS 135 SIGTRAN Protocol Emulation-ISDN over IP	20.8.1
software	x69xxxxxx	69	PKS 135 SIGTRAN Protocol Emulation-ISDN over IP	20.8.1
software	x68xxxxxx	69	PKS 135 SIGTRAN Protocol Emulation-ISDN over IP	20.8.1
software	x67xxxxxx	69	PKS 135 SIGTRAN Protocol Emulation-ISDN over IP	20.8.1

- Users can check the Warranty expiry date in the **Version** column that is **20.8.1** (i.e. 2020 August 1<sup>st</sup>), and user can verify the date to be as expected (depending on the support warranty purchased).

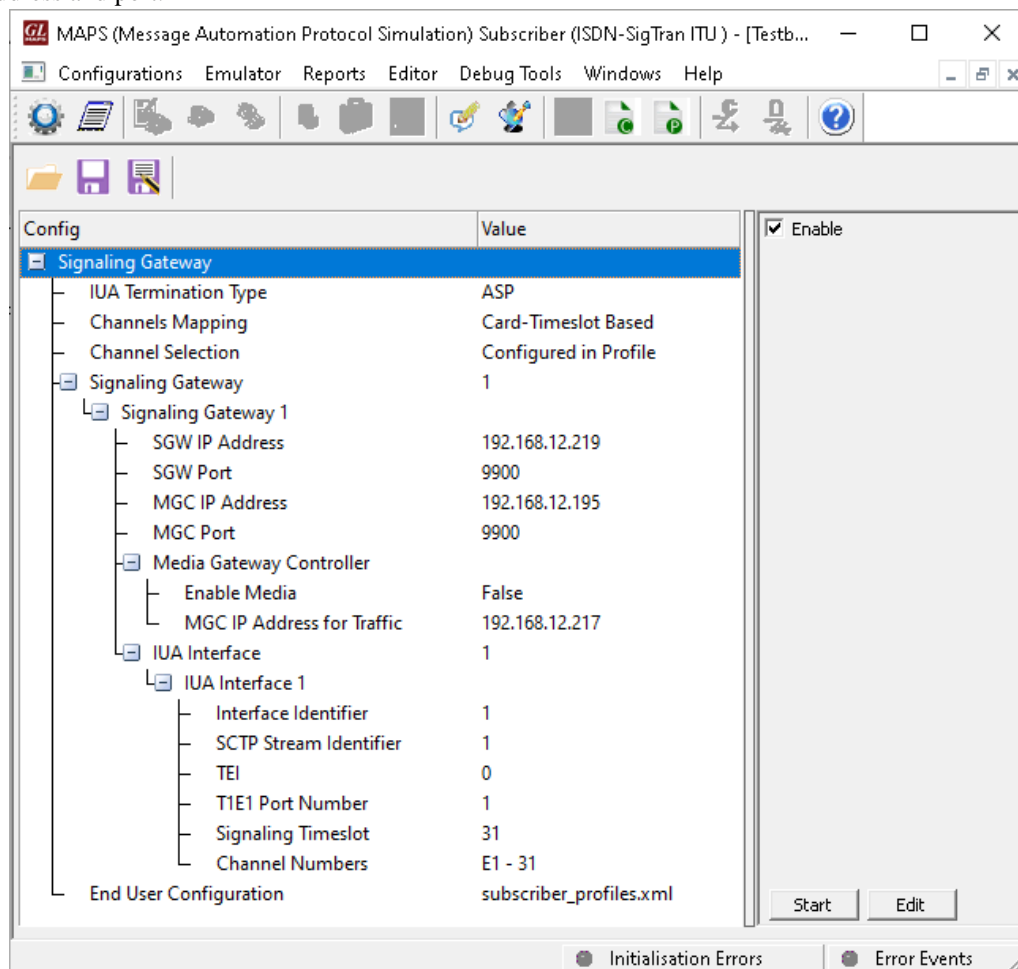
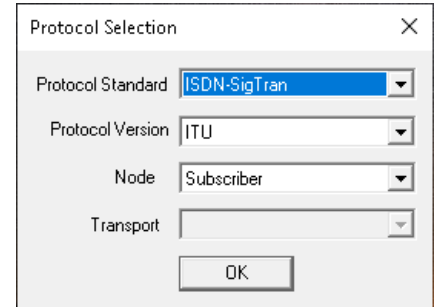
**Note:** Any latest software updates after warranty period will not be available until warranty licenses are renewed

- It is recommended to reboot the system after the software installation.
- Right-click on the **MAPS-ISDN-SIGTRAN** short-cut icon created on the desktop and select **'Run as Administrator'**. The application must invoke without any errors. If you had problems with installation so far, refer to [Troubleshoot](#) section explained below.

To quickly get started with the MAPS™ ISDN Sigtran application and for test scenario configurations, refer to [MAPS-ISDN-Sigtran-Quick-Verification-Guide](#).

## Invoking Application

- It is recommended to reboot the system after the software installation.
- Right-click on the **MAPS-ISDN Sigtran** shortcut icon created on the desktop and select 'Run as Administrator'.
- The application must invoke without any errors.
- Protocol Selection window is prompted as shown in the figure.
- By default, Protocol Selection window displays **Protocol Standard** as **ISDN-SigTran** and **Protocol Version** as **ITU**
- User should select the **ISDN SigTran Node** (Switch, Subscriber) and click **Ok**.
- Following this, the Testbed window is displayed as shown in the figure below, where the user should configure the node with proper IP address and port.



- **Save** the configurations and click **Start** in the Testbed window to get started with the test.
- This completes the successful installation of **MAPS™ ISDN SigTran** application. For a quick self-test procedure, refer to the steps explained in the **MAPS-ISDN-Sigtran-Quick-Verification-Guide** document.
- If you are still having issues or have any other related questions, please contact GL Communications at [info@gl.com](mailto:info@gl.com) for technical support.