

**MAPS™ Camel IP is licensed either through software licensing or USB hardware dongle. Follow the procedures below as per your purchase order.**

### **System Requirements**

---

- Windows® 10 and above Operating System (64 bit Only).
- Core i3 to i7 (or equivalent), 4 GB Memory, NIC, and USB Ports.

### **Software based licensing (for evaluation only)**

---

- In case of software-based licensing, the software executables, license installer, and documents can be downloaded from the software licensing web portal (refer to email notification from GL Communications).
- Follow the instructions in the <https://www.gl.com/ses/download/GL-Software-License-Evaluation-Instructions.pdf> to install software license.
- To verify that the purchased licenses are installed correctly, open any web browser from the system on which the software license is installed and type the URL "<http://localhost:1947/int/products.html>". Click on **Features** and confirm that the following **Product licenses** are listed:
  - PKS151 (MAPS for Camel IP)
- After completing software license installation, right-click on **MAPS-CamelIPx64.exe** and select **Run as Administrator** option to execute the application in administrator mode. Follow the on-screen instructions to complete the software installation.
- For a basic functional verification, refer to **MAPS-CamelIP-Quick-Verification-Guide**.

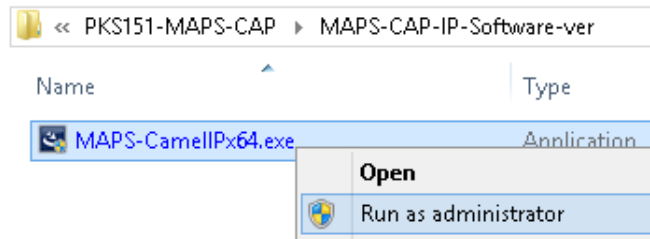
### **USB Hardware Dongle based licensing**

---

- If the software is licensed through hardware USB dongle, your shipment will contain a **USB Installation Stick** (pen drive) with necessary software executables, license installer, and documents.
- Plug-in the USB Installation Stick (pen drive) to the PC
- Navigate to **|GL-Dongle-LicenseInstaller** folder in installation USB stick and execute **GLLdkDongleLicenseInstaller\_x64.exe** (or **GLLdkDongleLicenseInstaller\_x86.exe**). Follow the on-screen instructions to complete the installation.
- For any issues during the installation, follow hardware dongle licensing procedure mentioned in the <https://www.gl.com/Brochures/Brochures/Installation-Instructions-for-Dongle-Programs.pdf>.
- Once the license installation is completed, plug the dongle to the USB port of your computer. Windows® should install all required drivers automatically. A red light should appear on the dongle indicating that it is functioning correctly from a physical point of view.
- You can verify if the required licenses are installed. Navigate to **C:\Program Files\GL Communications Inc\GLDONGLE** directory, execute **appl\_list.exe** and confirm that the following licenses are listed:
  - PKS151 (MAPS for CamelIP)

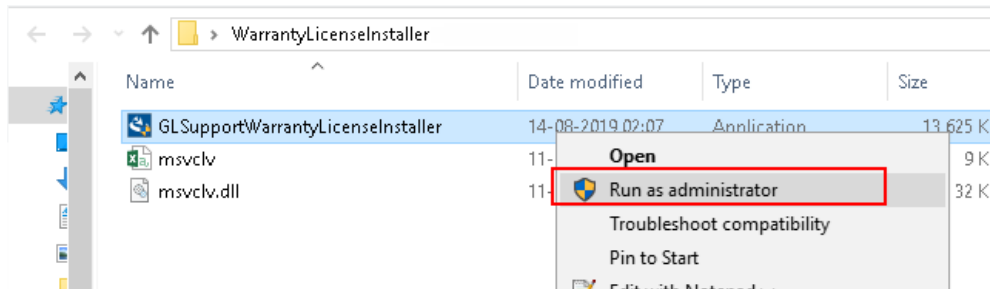
Note: Please verify that all licenses purchased are displayed using the **appl\_list.exe** utility.

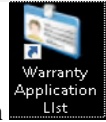
- Navigate to \PKS151-MAPS-CAP\MAPS-CAP-IP-Software-verXX folder, right click on MAPS-CamelIPx64.exe and select **Run as Administrator**. Follow the onscreen instructions and complete the installation.

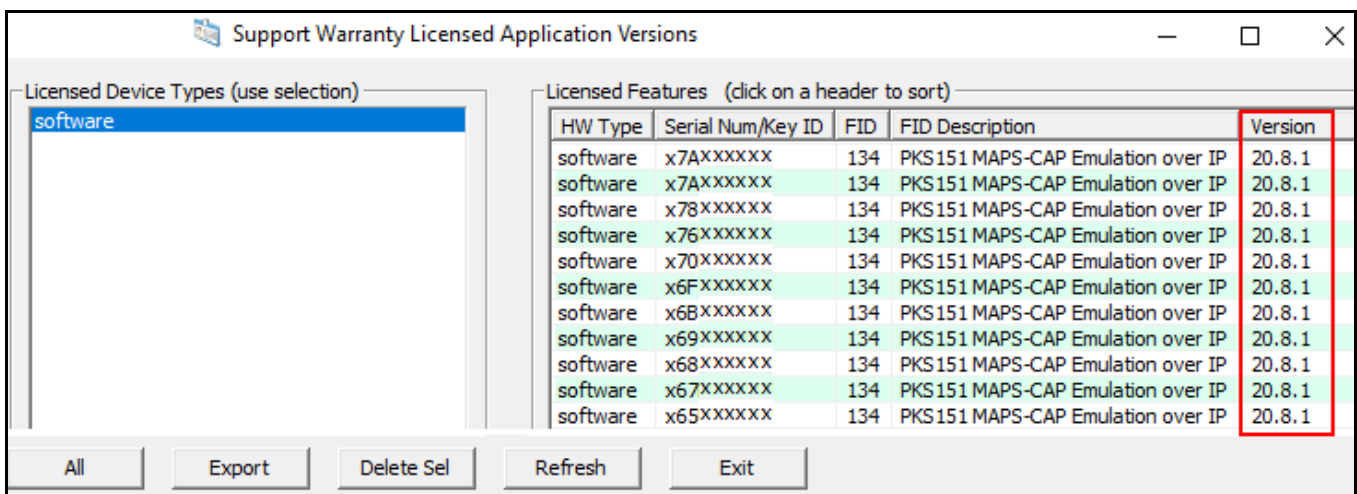


## Warranty License Installer

- Navigate to root directory in **USB installation stick** (pen drive) to **Warranty\_LicenseInstaller** folder, execute **GLSupportWarrantyLicenseInstaller.exe**. Follow the onscreen instructions and complete the installation.



- To confirm that warranty is installed properly, double-click on Warranty Application List icon . This will display the list of warranty applications which are purchased. Refer to the below figure



HW Type	Serial Num/Key ID	FID	FID Description	Version
software	x7Axxxxxx	134	PKS151 MAPS-CAP Emulation over IP	20.8.1
software	x7Axxxxxx	134	PKS151 MAPS-CAP Emulation over IP	20.8.1
software	x78xxxxxx	134	PKS151 MAPS-CAP Emulation over IP	20.8.1
software	x76xxxxxx	134	PKS151 MAPS-CAP Emulation over IP	20.8.1
software	x70xxxxxx	134	PKS151 MAPS-CAP Emulation over IP	20.8.1
software	x6Fxxxxxx	134	PKS151 MAPS-CAP Emulation over IP	20.8.1
software	x6Bxxxxxx	134	PKS151 MAPS-CAP Emulation over IP	20.8.1
software	x69xxxxxx	134	PKS151 MAPS-CAP Emulation over IP	20.8.1
software	x68xxxxxx	134	PKS151 MAPS-CAP Emulation over IP	20.8.1
software	x67xxxxxx	134	PKS151 MAPS-CAP Emulation over IP	20.8.1
software	x65xxxxxx	134	PKS151 MAPS-CAP Emulation over IP	20.8.1

- Users can check the Warranty expiry date in the **Version** column that is **20.8.1** (i.e. 2020 August 1<sup>st</sup>), and user can verify the date to be as expected (depending on the support warranty purchased).

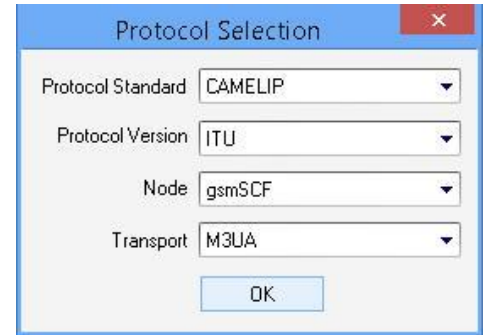
**Note:** All the MAPS™ software versions continue to operate normally. But any latest software updates after warranty period will not be available until warranty licenses are renewed

## Invoking Application

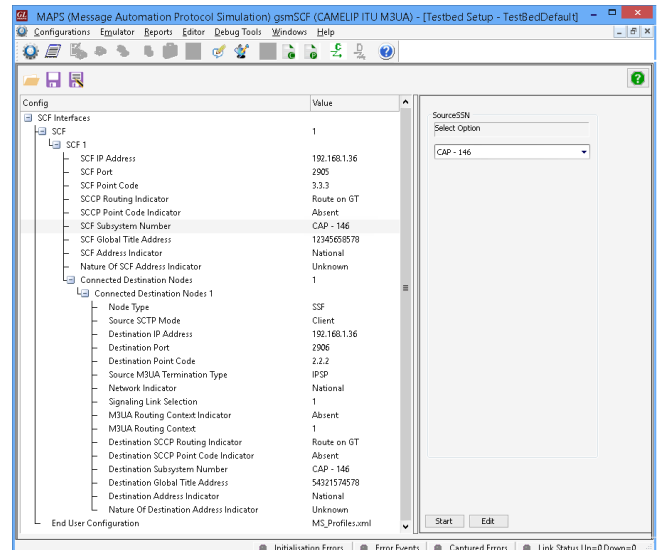
- It is recommended to reboot the system after the software installation.



- Right-click on **MAPSCamellIp** short-cut icon created on the desktop and select ‘**Run as Administrator**’. The application must invoke without any errors.
- Protocol Selection window is prompted as shown in the figure.
- By default, Protocol Selection window displays **Protocol Standard** as **CamelIP** and **Protocol Version** as **ITU**
- User should select the **CAP Node** (gsmSCF/gsmSSF) and **Transport** (supports M3UA, M2PA, M2UA, and SUA transport types) as required for the test



- Following this, the Testbed window is displayed as shown in the figure, where the user should configure the node with proper IP address and port.
- Save** the configurations and click on ‘**Start**’ in the Testbed window to get started with the test.



- This completes the successful installation of MAPS™ Camel IP application. For a quick self-test procedure, refer to the steps explained in the [MAPS-CamelIP-Quick-Verification-Guide](#) document.
- If you are still having issues or have any other related questions, please contact GL Communications Inc.