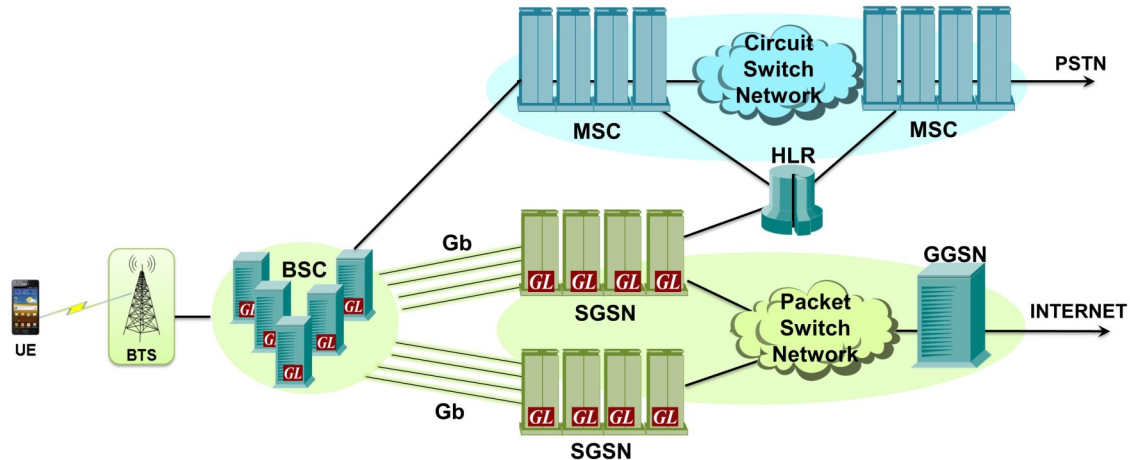


MAPS™ GPRS Gb Interface Emulation over IP/TDM



 MAPS™ GPRS Gb over IP/TDM
(2K simultaneous calls)

Overview

GPRS or General Packet Radio Service, was introduced (in the late 90's and early 2000's) to enhance data carrying capabilities of the basic GSM Network. Initially it used the conventional T1 E1 transport and Frame Relay protocol. As the wireless infrastructure evolved towards IP, the migration of 2G systems to IP interface provided many advantages including increased throughput, capacity and economy.

To permit our customers to emulate, test, and verify GPRS Gb over IP, GL offers **MAPS™ GPRS Gb** (Message Automation & Protocol Simulation), a multi-protocol, multi-technology platform that also supports many other protocol families including TDM, IP, ATM and Wireless.

MAPS™ GPRS Gb supports simulation of **BSS (Base Station Subsystem)** and **SGSN (Serving GPRS Support Node)** network elements over IP transmission protocol. MAPS™ GPRS Gb also supports **SGSN Pooling** feature to test and verify redundancy, load balancing, and scalability of network. SGSN pooling solution introduces a new routing mechanism which allows a BSC belonging to an SGSN Pool, connect to all SGSNs in that pool. This permits a mobile station to roam freely without a need to change the serving SGSN.

With the purchase of [ETH103 - Mobile Traffic GPRS Gb](#), MAPS™ GPRS Gb supports Mobile traffic simulation over Gb interface. Currently, this module transmits the pre-canned HTTP file (*.txt) between BSC and SGSN nodes. It multiplexes both signaling and traffic over Gb interface.

For more information, please visit [MAPS™ GPRS Gb Interfaces Emulation](#) webpage.

Main Features

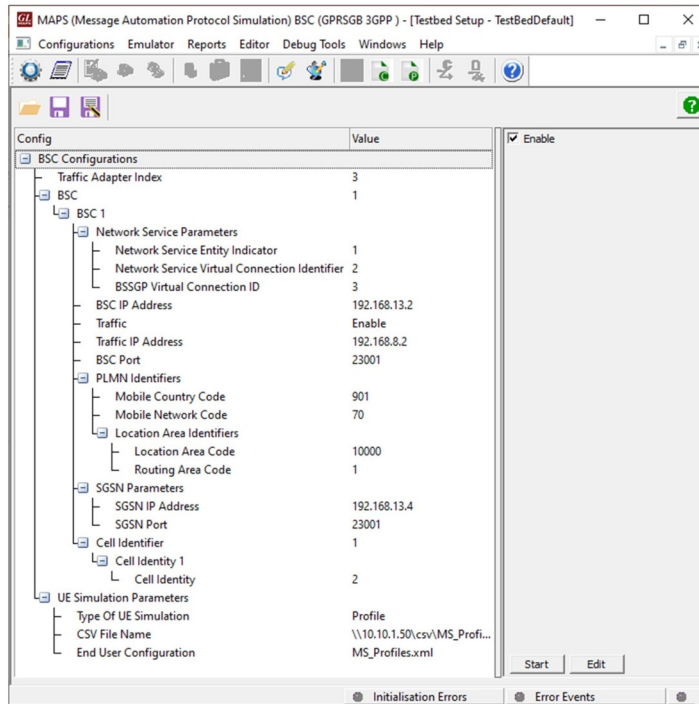
- Simulates SGSN and BSS over GPRS Gb interface.
- Simulates control plane Gb mode.
- Supports SGSN pooling to test and verify redundancy, load balancing, and scalability of network.
- Generates hundreds of Control Signaling (Load Testing).
- Generates and processes NS (Network Service), BSSGP (Base Station Subsystem GPRS Protocol) messages.
- Supported procedures includes Network Service Control, Identity Check, Combined GPRS / IMSI Attach, and Routing Area Update
- Simulates user plane GPRS Gb traffic supporting pre-canned HTTP file transmission.
- Insertion of impairments to create invalid messages.
- Supports customization of call flows and message templates using Script and Message Editors.
- Supports scripted call generation and automated call reception.
- Supports powerful utilities like Message Editor, Script Editor, and Profile Editor which allow new scenarios to be created or existing scenarios to be modified using various protocol messages and parameters.

 **GL Communications Inc.**

818 West Diamond Avenue - Third Floor, Gaithersburg, MD 20878, U.S.A
(Web) www.gl.com - (V) +1-301-670-4784 (F) +1-301-670-9187 - (E-Mail) info@gl.com

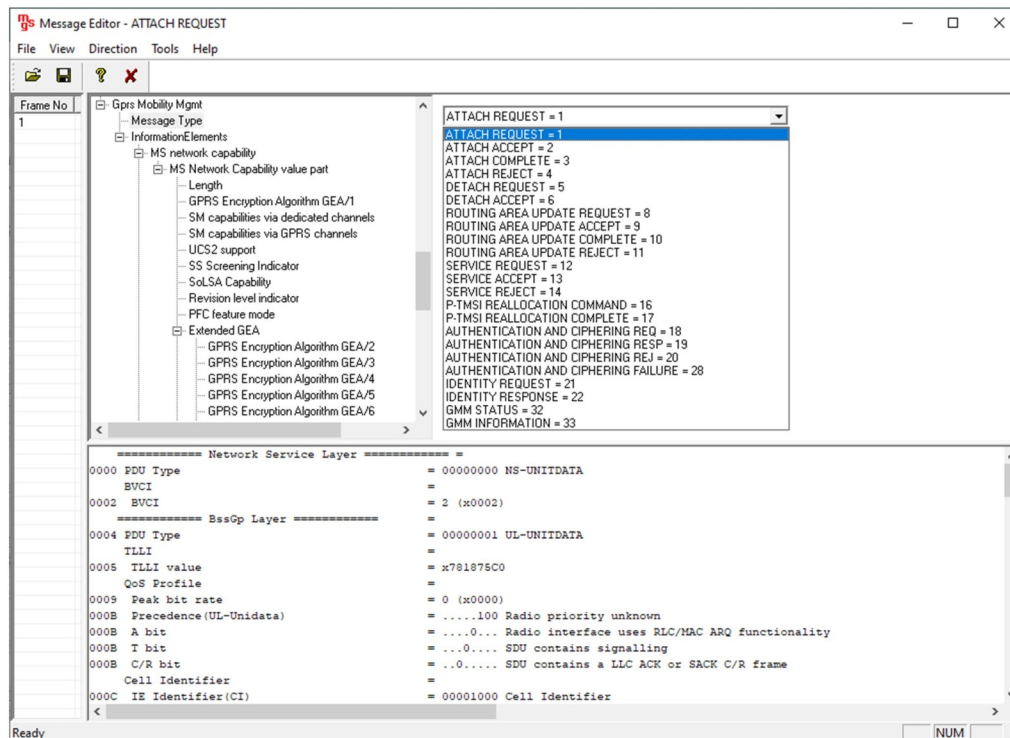
Testbed Configuration

Test Bed Setup provides options to establish communication between MAPS™ and the DUT. It includes configuration parameters to be set for UDP configuration. Once the testbed is setup, messages can be transmitted and received over IP network to the DUT. Default profile used to configure MAPS™ GPRS Gb with SGSN or BSC parameters.



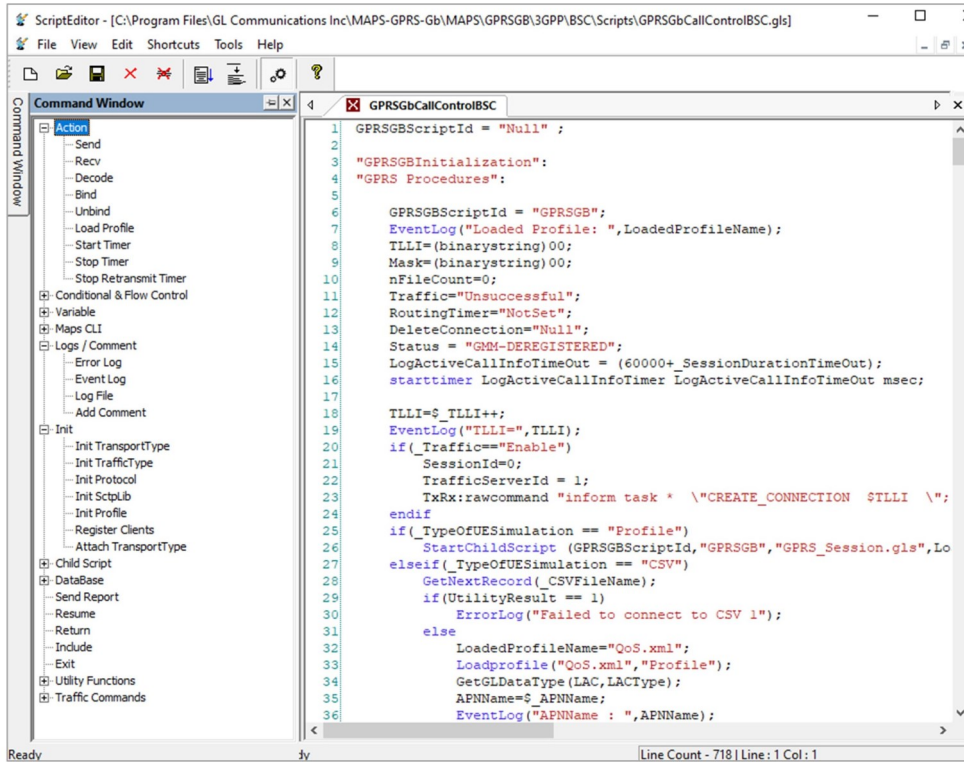
Pre-processing Tools

Message Editor - With message editor, users can build a template for each protocol message type. The value for each field may be changed in the message template prior to testing. The protocol fields comprises of mandatory fixed parameters, mandatory variable parameters, and optional variable parameters.

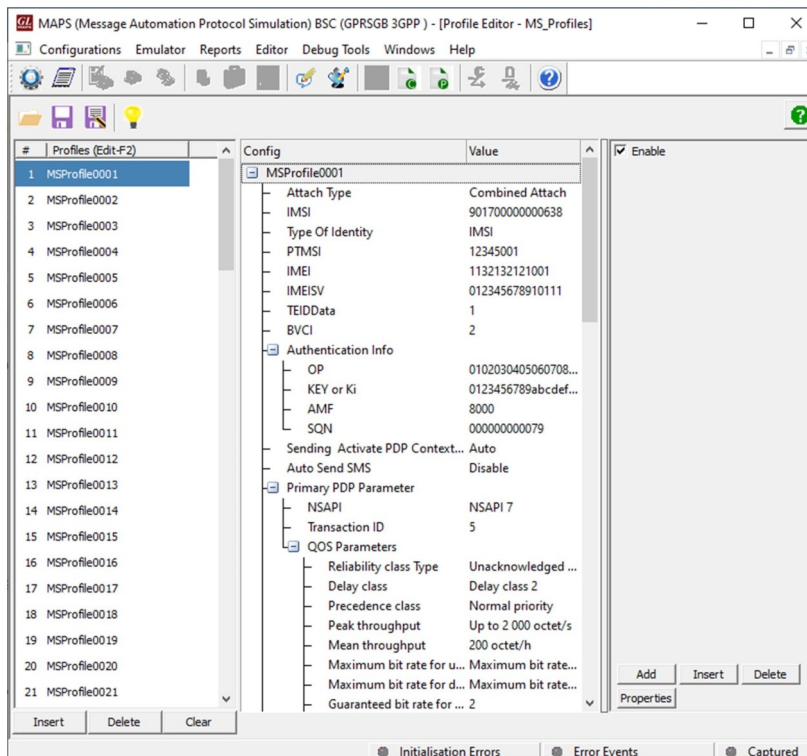


Pre-processing Tools (Contd...)

Script Editor - The script editor allows the user to create / edit scripts and access protocol fields as variables for the message template parameters. The script uses pre-defined message templates to perform send and receive actions.



Profile Editor - This feature allows loading profile to edit the values of the variables using GUI, replacing the original value of the variables in the message template. A XML file defines a set of multiple profiles with varying parameter values that allow users to configure call instances in call generation and to receive calls.



Call Generation and Call Reception

In call generation, MAPS™ is configured for the out going messages, while in call receive mode, it is configured to respond to incoming messages. Tests can be configured to run once, multiple iterations and continuously. Also, allows users to create multiple entries using quick configuration feature.

The editor allows to run the added scripts sequentially (order in which the scripts are added in the window) or randomly (any script from the list of added script as per the call flow requirements). The test scripts may be started manually or they can be automatically triggered by incoming messages.

The screenshot displays the MAPS BSC interface for call generation. The top table lists 10 script entries, all of which are in a 'Start' state. Below the table, a 'Message Sequence' diagram shows the flow of messages between the BSC and SGSN. The messages include ATTACH REQUEST, AUTHENTICATION AND CIPHERING REQ, AUTHENTICATION AND CIPHERING RESP, ATTACH ACCEPT, ATTACH COMPLETE, Activate PDP Context Request, and Activate PDP Context Accept. A detailed protocol stack view on the right shows parameters for the Network Service Layer and BSSOP Layer.

| Sr No. | Script Name | Profile | Call Info | Script Execut... | Status | Events | Events Prof... | Result | Total Iterations |
|--------|--------------------------|---------------|----------------------|------------------|---------------------|--------------|----------------|---------|------------------|
| 1 | GPRSGbCallControlBSC.gls | MSProfile0001 | IMSI.901700000000638 | Stop | GTP-U-MOBILE-TRAFFI | Stop Traffic | | Unknown | 1 |
| 2 | GPRSGbCallControlBSC.gls | MSProfile0002 | | Start | | None | | Unknown | 1 |
| 3 | GPRSGbCallControlBSC.gls | MSProfile0003 | | Start | | None | | Unknown | 1 |
| 4 | GPRSGbCallControlBSC.gls | MSProfile0004 | | Start | | None | | Unknown | 1 |
| 5 | GPRSGbCallControlBSC.gls | MSProfile0005 | | Start | | None | | Unknown | 1 |
| 6 | GPRSGbCallControlBSC.gls | MSProfile0006 | | Start | | None | | Unknown | 1 |
| 7 | GPRSGbCallControlBSC.gls | MSProfile0007 | | Start | | None | | Unknown | 1 |
| 8 | GPRSGbCallControlBSC.gls | MSProfile0008 | | Start | | None | | Unknown | 1 |
| 9 | GPRSGbCallControlBSC.gls | MSProfile0009 | | Start | | None | | Unknown | 1 |
| 10 | GPRSGbCallControlBSC.gls | MSProfile0010 | | Start | | None | | Unknown | 1 |

Figure: Call Generation

The screenshot displays the MAPS SGSN interface for call reception. The top table shows three script entries: 'GbSessionInit.gls' (Stop), 'NS_RESET_Recv.gls' (Stop), and 'GPRSGbCallControlSGSN.gls' (Completed). The 'Message Sequence' diagram shows the flow of messages from the DUT to the MAPS, including ATTACH REQUEST, AUTHENTICATION AND CIPHERING REQ, AUTHENTICATION AND CIPHERING RESP, ATTACH ACCEPT, ATTACH COMPLETE, Activate PDP Context Request, Activate PDP Context Accept, Deactivate PDP Context Request, and Deactivate PDP Context Accept. A protocol stack view on the right shows parameters for the Network Service Layer and BSSOP Layer.

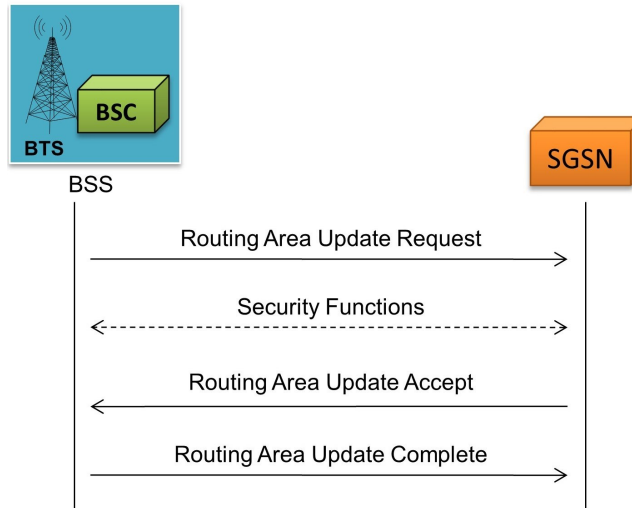
| Sr No. | Script Name | Profile | Call Info | Script Execution | Status | Events | Events Pro... | Results |
|--------|---------------------------|---------------|--------------------|------------------|------------------|--------|---------------|---------|
| 1 | GbSessionInit.gls | | | Stop | | None | | Unknown |
| 2 | NS_RESET_Recv.gls | | | Stop | | None | | Pass |
| 3 | GPRSGbCallControlSGSN.gls | MSProfile0001 | IMSI.9017000000006 | Completed | GMM-DEREGISTERED | None | | Pass |

Figure: Call Reception

MAPS™ GPRS Gb Procedures

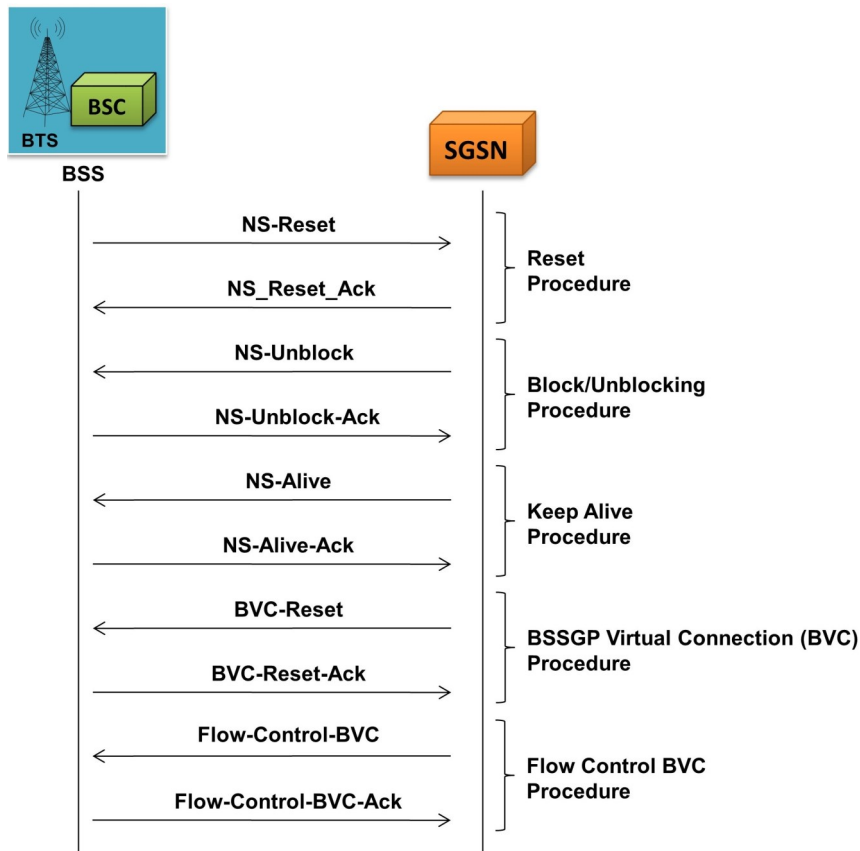
Routing Area Update Procedure

MAPS™ GPRS Gb configured as BSS sends a routing area update request when a GPRS-attached MS detects that it has entered a new RA, or when the periodic RA update timer has expired, or when the MS has to indicate new access capabilities to the network or, when a suspended MS is not resumed by the BSS



Network Service Control Procedure

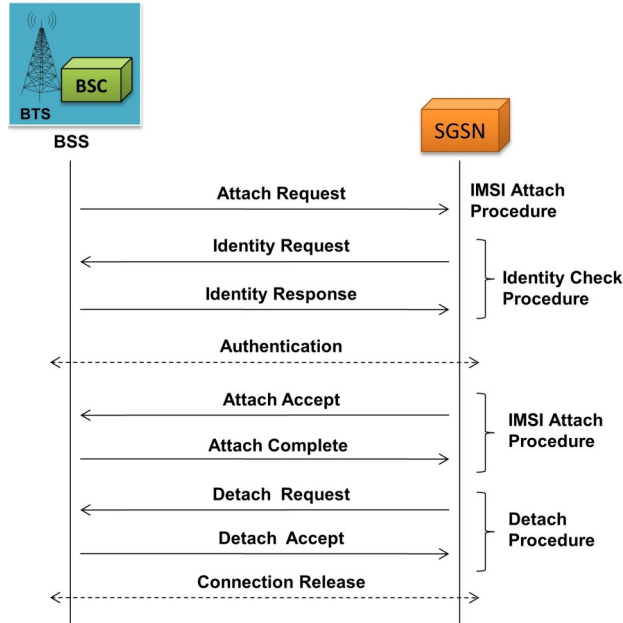
MAPS™ GPRS Gb configured as BSS uses this Network Service Control test procedure to check end-to-end communication with its peer entity (SGSN) on NS-VC.



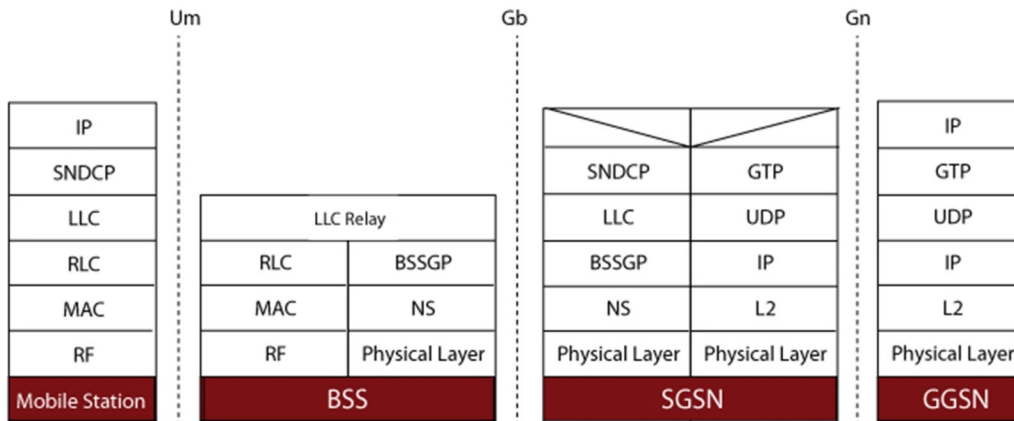
MAPS™ GPRS Gb Procedures (contd..)

IMSI Attach/Detach Procedure

MAPS™ GPRS Gb configured as BSC allows a GPRS attach request to be made to the SGSN. The SGSN sends Identity Request (Identity Type) to the MS. The MS responds with Identity Response (Mobile Identity).



Supported Protocols and Specifications



| Supported Protocols | Standard / Specification Used |
|-------------------------|--|
| BSSGP | 3GPP TS 08.18 V8.10.0 (2002-05) |
| LLC | 3GPP TS 04.64 V8.7.0 (2001-12) |
| NS (Network Service) | GSM 8.16 (ETSI TS 101 299 V8.0.0) |
| GMM | 3GPP 24.008 |
| SMG (GPRS Session Mgmt) | 3GPP TS 24.008 V5.16.0 (2006-06) (Release 5) |
| SNDCP | 3GPP TS 04.64 V8.7.0 (2001-12) |

Buyer's Guide

| Item No | Product Description |
|------------------------|--|
| PKS131 | MAPS™ Gb Emulator over IP |
| ETH100 | Mobile Traffic - PacketCheck™ |
| ETH101 | MobileTrafficCore - GTP |
| ETH102 | MobileTrafficCore - Gateway |
| ETH103 | MobileTrafficCore - Gb |
| PKV100 | PacketScan™ - All IP Protocol Analyzer |

For more information, please visit [MAPS™ GPRS Gb Interfaces Emulation](#) webpage.



GL Communications Inc.

818 West Diamond Avenue - Third Floor, Gaithersburg, MD 20878, U.S.A

(Web) www.gl.com - (V) +1-301-670-4784 (F) +1-301-670-9187 - (E-Mail) info@gl.com